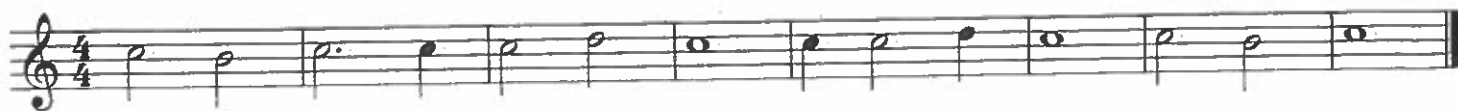


# 204 Progressive Sight Reading Tunes

Alto Saxophone  
Eb Clarinet

Roger Winslow

Tune No. 1



Tune No. 2



Tune No. 3



Tune No. 4



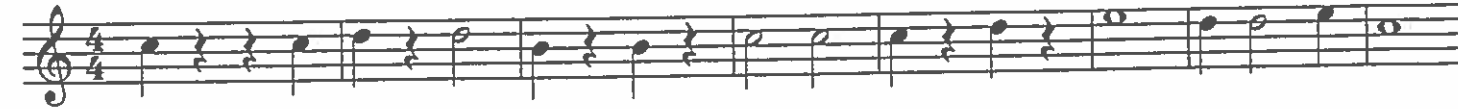
Tune No. 5



Tune No. 6



Tune No. 7



Tune No. 8



Alto Saxophone  
Eb Clarinet

Tune No. 9



Tune No. 10



Tune No. 11



Tune No. 12



Tune No. 13



Tune No. 14



Tune No. 15



Tune No. 16



Alto Saxophone  
Eb Clarinet

Tune No. 17



Tune No. 18



Tune No. 19



Tune No. 20



Tune No. 21



Tune No. 22



Tune No. 23



Tune No. 24



Alto Saxophone  
Eb Clarinet

Tune No. 25



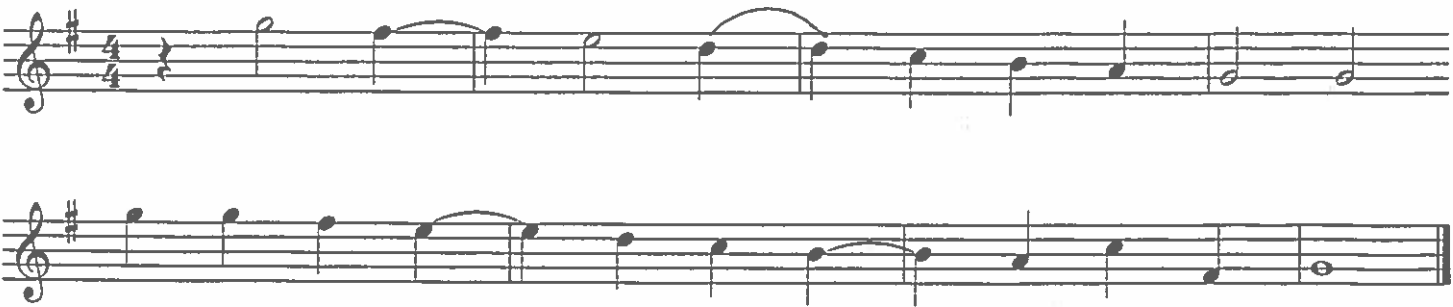
Tune No. 26



Tune No. 27



Tune No. 28



Tune No. 29



Alto Saxophone  
Eb Clarinet

Tune No.30

Musical notation for Tune No. 30, consisting of two staves. The first staff is in treble clef with a key signature of two sharps (F# and C#) and a 3/4 time signature. The melody consists of quarter and eighth notes. The second staff continues the melody with a slur over the final three notes.

Tune No. 31

Musical notation for Tune No. 31, consisting of one staff in treble clef with a key signature of one sharp (F#) and a common time signature. The melody features quarter notes and rests.

Tune No. 32

Musical notation for Tune No. 32, consisting of one staff in treble clef with a key signature of one sharp (F#) and a 4/4 time signature. The melody consists of quarter notes and rests.

Tune No. 33

Musical notation for Tune No. 33, consisting of one staff in treble clef with a key signature of one sharp (F#) and a common time signature. The melody consists of quarter notes and rests.

Tune No. 34

Musical notation for Tune No. 34, consisting of one staff in treble clef with a key signature of two sharps (F# and C#) and a common time signature. The melody consists of quarter notes and rests.

Tune No. 35

Musical notation for Tune No. 35, consisting of one staff in treble clef with a key signature of three sharps (F#, C#, and G#) and a 4/4 time signature. The melody consists of quarter notes and rests.

Tune No. 36

Musical notation for Tune No. 36, consisting of one staff in treble clef with a key signature of two sharps (F# and C#) and a 3/4 time signature. The melody consists of quarter notes and rests.

Alto Saxophone  
Eb Clarinet

Tune No. 37



Tune No. 38



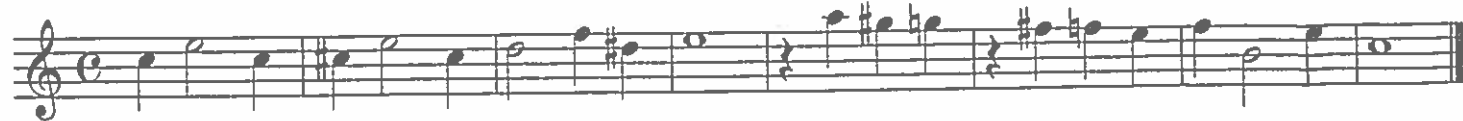
Tune No. 39



Tune No. 40



Tune No. 41



Tune No. 42



Tune No. 43

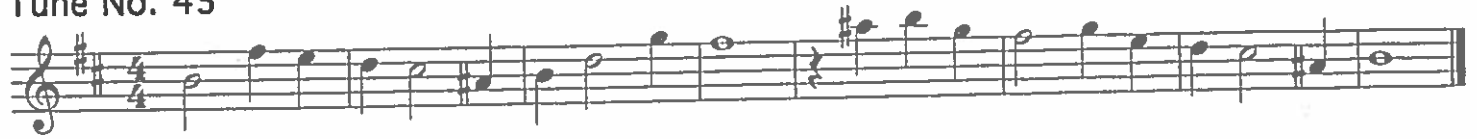


Alto Saxophone  
Eb Clarinet

Tune No. 44



Tune No. 45



Tune No. 46



Tune No. 47



Tune No. 48



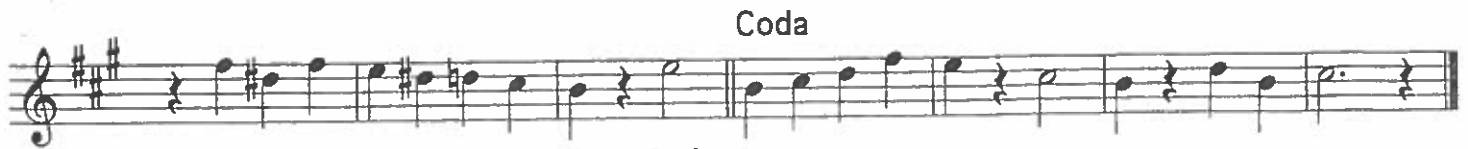
Tune No. 49



Jan 27

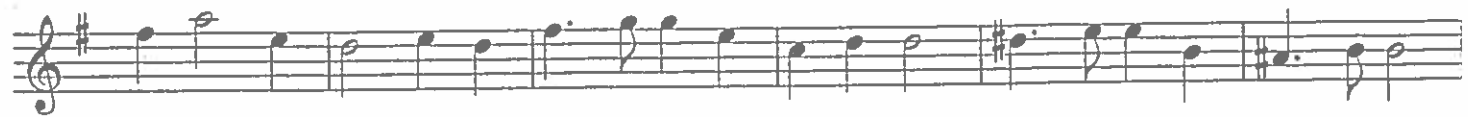
Alto Saxophone  
Eb Clarinet

Tune No. 50



D.C. al  $\oplus$  Coda

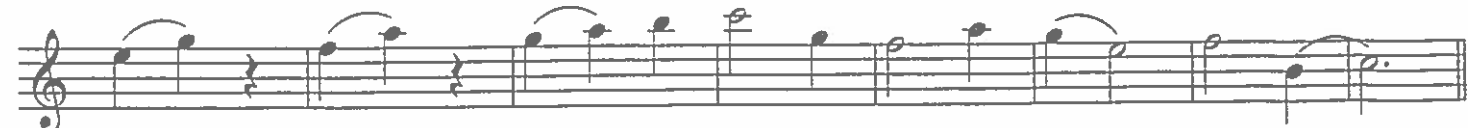
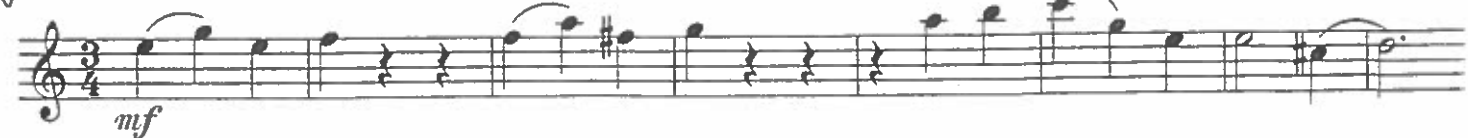
Tune No. 51



Tune No. 52



Tune No. 53





F. 1/8

# Alto Saxophone Eb Clarinet

## Tune No. 54

Musical notation for Tune No. 54, featuring a treble clef, a key signature of one sharp (F#), and a 4/4 time signature. The melody consists of quarter and eighth notes with some slurs. The dynamic marking *mf* is present below the staff.

## Tune No. 55

Musical notation for Tune No. 55, featuring a treble clef, a key signature of one sharp (F#), and a 3/4 time signature. The melody consists of quarter and eighth notes. The dynamic marking *f* is present below the staff.

## Tune No. 56

Musical notation for Tune No. 56, featuring a treble clef, a key signature of one sharp (F#), and a 3/4 time signature. The melody consists of quarter and eighth notes with some rests. The dynamic marking *f* is present below the staff.

## Tune No. 57

Musical notation for Tune No. 57, featuring a treble clef, a key signature of one sharp (F#), and a 4/4 time signature. The melody consists of quarter and eighth notes with some rests. The dynamic marking *f* is present below the staff.

## Tune No. 58

Musical notation for Tune No. 58, featuring a treble clef, a key signature of one sharp (F#), and a 3/4 time signature. The melody consists of quarter and eighth notes. The dynamic marking *mf* is present below the staff.

## Tune No. 59

Musical notation for Tune No. 59, featuring a treble clef, a key signature of one sharp (F#), and a 4/4 time signature. The melody consists of quarter and eighth notes with some rests. A flat (b) is placed below a note in the fifth measure. The dynamic marking *f* is present below the staff.

## Tune No. 60

Musical notation for Tune No. 60, featuring a treble clef, a common time signature (C), and a 4/4 time signature. The melody consists of quarter and eighth notes with some rests. The dynamic marking *f* is present below the staff.

## Tune No. 61

Musical notation for Tune No. 61, featuring a treble clef, a key signature of one sharp (F#), and a 3/4 time signature. The melody consists of quarter and eighth notes with some rests. The dynamic marking *f* is present below the staff.

## Tune No. 62

Musical notation for Tune No. 62, featuring a treble clef, a key signature of one sharp (F#), and a 4/4 time signature. The melody consists of quarter and eighth notes with some rests. The dynamic marking *f* is present below the staff.

FL 510

# Alto Saxophone Eb Clarinet

## Tune No. 63

Musical notation for Tune No. 63, featuring a treble clef, a key signature of one sharp (F#), and a common time signature (C). The melody begins with a dynamic marking of *f* (forte). The piece consists of a single line of music with various rhythmic values and rests.

## Tune No. 64

Musical notation for Tune No. 64, featuring a treble clef, a key signature of one sharp (F#), and a 4/4 time signature. The melody begins with a dynamic marking of *mf* (mezzo-forte). The piece consists of a single line of music with various rhythmic values and rests.

## Tune No. 65

Musical notation for Tune No. 65, featuring a treble clef, a key signature of two sharps (F# and C#), and a common time signature (C). The melody begins with a dynamic marking of *mp* (mezzo-piano). The piece consists of a single line of music with various rhythmic values and rests.

## Tune No. 66

Musical notation for Tune No. 66, featuring a treble clef, a key signature of one sharp (F#), and a common time signature (C). The melody begins with a dynamic marking of *f* (forte) and includes a *ff* (fortissimo) marking later in the piece. The piece consists of a single line of music with various rhythmic values and rests.

## Tune No. 67

Musical notation for Tune No. 67, featuring a treble clef, a key signature of two sharps (F# and C#), and a 4/4 time signature. The melody begins with a dynamic marking of *f* (forte). The piece consists of two lines of music with various rhythmic values and rests. A handwritten note "FL 515" is written above the first line.

## Tune No. 68

Musical notation for Tune No. 68, featuring a treble clef, a key signature of one sharp (F#), and a 4/4 time signature. The melody begins with a dynamic marking of *f* (forte). The piece consists of two lines of music with various rhythmic values and rests.

## Tune No. 69

Musical notation for Tune No. 69, featuring a treble clef, a key signature of one sharp (F#), and a common time signature (C). The melody begins with a dynamic marking of *mf* (mezzo-forte). The piece consists of a single line of music with various rhythmic values and rests.

Alto Saxophone  
Eb Clarinet

Tune No. 70

Musical notation for Tune No. 70, featuring two staves. The first staff begins with a treble clef, a key signature of one sharp (F#), and a common time signature (C). The music starts with a dynamic marking of *f* (forte). The melody consists of eighth and quarter notes, with some rests. The second staff continues the melody with similar rhythmic patterns and rests.

Tune No. 71

Musical notation for Tune No. 71, featuring two staves. The first staff begins with a treble clef, a key signature of two flats (Bb, Eb), and a common time signature (C). The music starts with a dynamic marking of *mf* (mezzo-forte). The melody consists of quarter and eighth notes, with some rests. The second staff continues the melody with similar rhythmic patterns and rests.

Tune No. 72

Legato

Musical notation for Tune No. 72, featuring three staves. The first staff begins with a treble clef, a key signature of two sharps (F#, C#), and a common time signature (C). The music starts with a dynamic marking of *mp* (mezzo-piano). The melody consists of quarter and eighth notes, with some rests. The second and third staves continue the melody with similar rhythmic patterns and rests.

Tune No. 73

Dolce

Musical notation for Tune No. 73, featuring three staves. The first staff begins with a treble clef, a key signature of one flat (Bb), and a 3/4 time signature. The music starts with a dynamic marking of *mp* (mezzo-piano). The melody consists of quarter and eighth notes, with some rests. The second and third staves continue the melody with similar rhythmic patterns and rests.

Alto Saxophone  
Eb Clarinet

Tune No. 74  
Expressively

*mf*

Coda

D.C. al  $\oplus$  Coda

Tune No. 75  
Ballad

*mf* *mf*

Tune No. 76  
Waltz

$\oplus$

Tune No. 77  
Spritly

Alto Saxophone  
Eb Clarinet

Tune No. 78

Sweetly

*p*  
Ritard.

Tune No. 79

In One

*mf*

Tune No. 80

Slowly

*mp*

Tune No. 81

Liltingly

*mf*

Tune No. 82

Broadly

*f*

Alto Saxophone  
Eb Clarinet

Tune No. 83  
Slow Valse



Tune No. 84  
Lightly in 2



Tune No. 85  
Moderato



Tune No. 86  
Andante



Tune No. 87  
Marcia



# Alto Saxophone Eb Clarinet

## Tune No. 88

Andante

*mp* Rit.

## Tune No. 89

Lively

*f*

## Tune No. 90

Moderato

*mf*

## Tune No. 91

Tenderly

*p* Rit.

## Tune No. 92

March

*f*

Alto Saxophone  
Eb Clarinet

Tune No. 93

Musical score for Tune No. 93, featuring three staves of music in 3/4 time. The key signature is one sharp (F#). The first staff begins with a dynamic marking of *mf*. The music consists of eighth and quarter notes with various articulations such as accents and slurs.

Tune No. 94

Minuet

Musical score for Tune No. 94, titled "Minuet", featuring two staves of music in 3/4 time. The key signature is two sharps (D# and F#). The first staff begins with a dynamic marking of *mp*. The music includes first and second endings, indicated by bracketed lines and numbers 1 and 2.

Tune No. 95

In 2

Musical score for Tune No. 95, titled "In 2", featuring two staves of music in 2/4 time. The key signature is two sharps (D# and F#). The first staff begins with a dynamic marking of *f*. The music consists of eighth and quarter notes.

Tune No. 96

In 2

Musical score for Tune No. 96, titled "In 2", featuring two staves of music in 2/4 time. The key signature is one sharp (F#). The first staff begins with a dynamic marking of *mf*. The music consists of eighth and quarter notes.



Alto Saxophone  
Eb Clarinet

Tune No. 97

In 2

Musical notation for Tune No. 97, In 2. The piece is in G major and 6/8 time. It begins with a treble clef, a key signature of one sharp (F#), and a 6/8 time signature. The melody starts on G4 and moves through various intervals, including eighth and sixteenth notes, ending with a quarter rest. The dynamic marking is *mf*.

Tune No. 98

In 2

Musical notation for Tune No. 98, In 2. The piece is in G major and 6/8 time. It begins with a treble clef, a key signature of one sharp (F#), and a 6/8 time signature. The melody starts on G4 and moves through various intervals, including eighth and sixteenth notes, ending with a quarter rest. The dynamic marking is *mf*.

Tune No. 99

Allegretto

Musical notation for Tune No. 99, Allegretto. The piece is in G major and 2/4 time. It begins with a treble clef, a key signature of one sharp (F#), and a 2/4 time signature. The melody starts on G4 and moves through various intervals, including eighth and sixteenth notes, ending with a quarter rest. The dynamic marking is *mf*.

Tune No. 100

Moderato In 2

Musical notation for Tune No. 100, Moderato In 2. The piece is in G major and 6/8 time. It begins with a treble clef, a key signature of one sharp (F#), and a 6/8 time signature. The melody starts on G4 and moves through various intervals, including eighth and sixteenth notes, ending with a quarter rest. The dynamic marking is *mf*.

Tune No. 101

Andante

Musical notation for Tune No. 101, Andante. The piece is in G major and 3/4 time. It begins with a treble clef, a key signature of one sharp (F#), and a 3/4 time signature. The melody starts on G4 and moves through various intervals, including eighth and sixteenth notes, ending with a quarter rest. The dynamic marking is *p*.

Tune No. 102

Slowly and Expressively

Musical notation for Tune No. 102, Slowly and Expressively. The piece is in G major and 3/4 time. It begins with a treble clef, a key signature of one sharp (F#), and a 3/4 time signature. The melody starts on G4 and moves through various intervals, including eighth and sixteenth notes, ending with a quarter rest. The dynamic marking is *p*.

**E♭ Alto Saxophone  
E♭ Clarinet**

**Tune No. 103**

Moderato



**Tune No. 104**

Sprightly



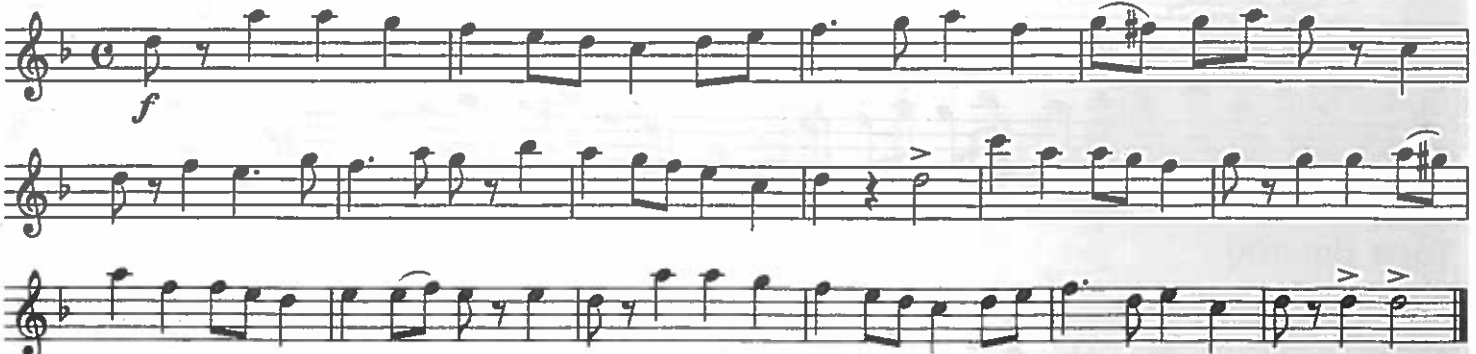
**Tune No. 105**

Andante Moderato



**Tune No. 106**

Marcia



**Tune No. 107**

Allegro Moderato



**Tune No. 108**

Sadly



**Tune No. 109**

March



**E♭ Alto Saxophone  
E♭ Clarinet**

**Tune No. 110  
Moderato**

Musical notation for Tune No. 110, Moderato. The piece is in 6/8 time and D major. It features a single staff with a melody of eighth and quarter notes. The dynamic marking is *mf*.

**Tune No. 111  
Moderately Fast**

Musical notation for Tune No. 111, Moderately Fast. The piece is in 6/8 time and D major. It consists of three staves of music, primarily using eighth and quarter notes. The dynamic marking is *mf*.

**Tune No. 112  
Moderato**

Musical notation for Tune No. 112, Moderato. The piece is in 6/8 time and D major. It consists of two staves of music, featuring a melody with many slurs and ties. The dynamic marking is *mf*.

**Tune No. 113  
Marcia**

Musical notation for Tune No. 113, Marcia. The piece is in 2/4 time and D major. It features a single staff with a melody of eighth and quarter notes. The dynamic marking is *f*.

**Tune No. 114  
Allegretto**

Musical notation for Tune No. 114, Allegretto. The piece is in 4/4 time and D major. It features a single staff with a melody of quarter and eighth notes. The dynamic marking is *mf*.

**Tune No. 115  
Allegro Moderato**

Musical notation for Tune No. 115, Allegro Moderato. The piece is in 3/4 time and D major. It consists of two staves of music, featuring a melody of quarter and eighth notes. The dynamic marking is *mp*.

**E♭ Alto Saxophone  
E♭ Clarinet**

**Tune No. 116  
Moderato (In 2)**

Musical notation for Tune No. 116, Moderato (In 2). The piece is in 6/8 time and begins with a mezzo-forte (*mf*) dynamic. The melody is written on a single staff.

**Tune No. 117  
Spirited**

Musical notation for Tune No. 117, Spirited. The piece is in 2/4 time and begins with a forte (*f*) dynamic. The melody is written on two staves.

**Tune No. 118  
Allegretto**

Musical notation for Tune No. 118, Allegretto. The piece is in 4/4 time and begins with a mezzo-forte (*mf*) dynamic. The melody is written on three staves.

**Tune No. 119  
Moderato**

Musical notation for Tune No. 119, Moderato. The piece is in 4/4 time and begins with a forte (*f*) dynamic. The melody is written on two staves. A Coda symbol is present at the end of the first staff. Below the second staff, the instruction "D.C. al Coda" is written.

**Tune No. 120  
Slow March**

Musical notation for Tune No. 120, Slow March. The piece is in 3/4 time and begins with a mezzo-forte (*mf*) dynamic. The melody is written on two staves, featuring several triplet markings (indicated by the number 3 above the notes).

**E♭ Alto Saxophone  
E♭ Clarinet**

**Tune No. 121  
Allegretto**

Two staves of musical notation for Tune No. 121. The first staff begins with a dynamic marking of *f* and features a triplet of eighth notes. The second staff continues the melody with additional triplet markings.

**Tune No. 122  
Andante**

A single staff of musical notation for Tune No. 122 in 6/8 time, starting with a dynamic marking of *mf*. The melody is characterized by flowing eighth and sixteenth notes.

**Tune No. 123  
With Vigor**

Three staves of musical notation for Tune No. 123 in 2/4 time, beginning with a dynamic marking of *f*. The music is energetic, featuring eighth and sixteenth notes.

**Tune No. 124  
Tempo Di Valse**

Two staves of musical notation for Tune No. 124 in 3/4 time, starting with a dynamic marking of *mp*. The melody is graceful, typical of a waltz, with dotted rhythms.

**Tune No. 125  
Moderato**

Two staves of musical notation for Tune No. 125 in 2/4 time, beginning with a dynamic marking of *mf*. The melody is steady and moderate in tempo.

**E♭ Alto Saxophone  
E♭ Clarinet**

**Tune No. 126**

**Dolce**

*mp* a tempo Rit. Rit.

**Tune No. 127**

**Joyously**

*mf*

**Tune No. 128**

**Marcia**

*mf* Fine D.C. al Fine

**Tune No. 129**

**Tempo Di Valse**

*mf*

**Tune No. 130**

**Slowly and Legato**

*mp*

E♭ Alto Saxophone  
E♭ Clarinet

Tune No. 131

Lively

mf

Tune No. 132

Marcia

f

Tune No. 133

Andante

mf

Tune No. 134

Marcia

f

Coda

D.S.al coda

Tune No. 135

Slowly And Expressively

mf

Ritard.

**E♭ Alto Saxophone  
E♭ Clarinet**

**Tune No. 136**

Moderato

mf

**Tune No. 137**

Slowly And Expressively

mp

**Tune No. 138**

Allegro (In 6)

mf

**Tune No. 139**

Moderato

mp



**E♭ Alto Saxophone  
E♭ Clarinet**

**Tune No. 140**

**Smoothly (One To The Bar)**

*mp*

**Tune No. 141**

**Dolce**

*mp*

*a tempo*

*Rit.*

**Tune No. 142**

**Allegro**

*mf*

**Tune No. 143**

**Allegro Moderato**

*mf*

**E♭ Alto Saxophone  
E♭ Clarinet**

**Tune No. 144**

Alla Marcia

Two staves of musical notation for Tune No. 144. The first staff starts with a forte (*f*) dynamic marking. The music is in 2/4 time and D major, featuring eighth and sixteenth notes with various articulations.

**Tune No. 145**

Lightly

Two staves of musical notation for Tune No. 145. The first staff starts with a mezzo-piano (*mp*) dynamic marking. The music is in 2/4 time and D major, featuring eighth and sixteenth notes with various articulations.

**Tune No. 146**

Moderato

Two staves of musical notation for Tune No. 146. The first staff starts with a mezzo-forte (*mf*) dynamic marking. The music is in 2/4 time and D major, featuring eighth and sixteenth notes with various articulations.

**Tune No. 147**

Moderato

Four staves of musical notation for Tune No. 147. The first staff starts with a mezzo-forte (*mf*) dynamic marking. The music is in 3/4 time and D major, featuring eighth and sixteenth notes with various articulations.

**E♭ Alto Saxophone  
E♭ Clarinet**

**Tune No. 148**

**Moderato**

**Tune No. 149**

**Andante Expressivo**

D.C. al  $\oplus$  Coda

**Tune No. 150**

**Slowly**

**Tune No. 151**

**Moderately Slow**

**Tune No. 152**

**Tempo Di Bolero**

**E♭ Alto Saxophone  
E♭ Clarinet**

**Tune No. 153  
Andante e Dolce**

*mp*

**Tune No. 154  
Moderately (2 to the Bar)**

*mf*

**Tune No. 155  
Andante e Legato**

*mf*

**Tune No. 156  
Cossack Dance**

*f*

**E♭ Alto Saxophone  
E♭ Clarinet**

**Tune No. 157**

**Rubato**

Musical notation for Tune No. 157, Rubato. The piece is in 3/4 time with a key signature of one sharp (F#). It consists of two staves of music. The first staff begins with a dynamic marking of *mp*. The melody is characterized by long, sweeping phrases with many slurs and fermatas, indicating a slow, expressive tempo.

**Tune No. 158**

**Poignantly**

Musical notation for Tune No. 158, Poignantly. The piece is in 4/4 time with a key signature of two sharps (F# and C#). It consists of two staves of music. The first staff begins with a dynamic marking of *mp*. The melody features several triplet markings and is marked with slurs and fermatas throughout.

**Tune No. 159**

**Lively**

Musical notation for Tune No. 159, Lively. The piece is in 2/4 time with a key signature of one flat (B♭). It consists of two staves of music. The first staff begins with a dynamic marking of *mf*. The melody is rhythmic and includes a diamond-shaped symbol (Coda symbol) above the staff. The second staff concludes with the word "Coda" above the staff and the instruction "D.C. al Coda" below it.

**Tune No. 160**

**Indian Dance**

Musical notation for Tune No. 160, Indian Dance. The piece is in 2/4 time with a key signature of two sharps (F# and C#). It consists of one staff of music. The melody is rhythmic and includes several slurs and fermatas. It begins with a dynamic marking of *mf*.

**Tune No. 161**

**Allegro**

Musical notation for Tune No. 161, Allegro. The piece is in 2/4 time with a key signature of two sharps (F# and C#). It consists of two staves of music. The melody is rhythmic and includes several slurs and fermatas. It begins with a dynamic marking of *mf*.

**Eb Alto Saxophone  
Eb Clarinet**

**Tune No. 162  
2 to the Bar**

**Tune No. 163  
Clog Dance**

**Tune No. 164  
Ragtime**

**Tune No. 165  
Andante e Dolce**

**Tune No. 166  
Sadly**

**E♭ Alto Saxophone  
E♭ Clarinet**

**Tune No. 167**

**Allegretto**

**Tune No. 168**

**Tempo Di Valse**

**Tune No. 169**

**Allegro Spirituoso**

**E♭ Alto Saxophone  
E♭ Clarinet**

**Tune No. 170**

**Andante Expressivo**

*mp*

**Tune No. 171**

**Gaily but not Fast**

*mf*

**Tune No. 172**

**Lively**

*f*

**Tune No. 173**

**With Spirit**

*f*



**E♭ Alto Saxophone  
E♭ Clarinet**

**Tune No. 174**

**Moderately Slow**

*Dolce*  
*mp*

**Tune No. 175**

**Boldly**

*f*

**Tune No. 176**

**Flowingly**

*mp*

**Tune No. 177**

**Lively**

*mf*

*Coda*  
D.S. al ⊘ Coda

**Tune No. 178**

**Moderato**

*mf*

**E♭ Alto Saxophone  
E♭ Clarinet**

**Tune No. 179  
Allegretto**

**Tune No. 180  
In 2 With Spirit**

**Tune No. 181  
Allegretto**

**Tune No. 182  
Andante**

**E♭ Alto Saxophone  
E♭ Clarinet**

**Tune No. 183**

Slowly

Musical notation for Tune No. 183, starting with a treble clef, a key signature of two sharps (F# and C#), and a 2/4 time signature. The piece begins with a piano (*p*) dynamic. The melody is characterized by long, sweeping phrases with many slurs. The notation concludes with a *Rit.* (ritardando) marking.

**Tune No. 184**

Allegro

Musical notation for Tune No. 184, starting with a treble clef, a key signature of one flat (F), and a 2/4 time signature. The piece begins with a mezzo-forte (*mf*) dynamic. The melody is more rhythmic and active than the previous tune, featuring many eighth and sixteenth notes.

**Tune No. 185**

Andante Expressivo

Musical notation for Tune No. 185, starting with a treble clef, a key signature of two sharps (F# and C#), and a 4/4 time signature. The piece begins with a mezzo-piano (*mp*) dynamic. It features long, expressive phrases with many slurs. The dynamics vary throughout, including *f* (forte) and *p* (piano) markings.

**Tune No. 186**

Moderate Waltz

Musical notation for Tune No. 186, starting with a treble clef, a key signature of three sharps (F#, C#, G#), and a 3/4 time signature. The piece begins with a mezzo-forte (*mf*) dynamic. The melody is characteristic of a waltz, with a steady 3/4 rhythm and many slurs.

**Tune No. 187**

Smoothly

Musical notation for Tune No. 187, starting with a treble clef, a key signature of three sharps (F#, C#, G#), and a common time signature. The piece begins with a piano (*p*) dynamic. It features long, flowing phrases with many slurs. The dynamics include *mf*, *dim* (diminuendo), *cresc* (crescendo), and *f* (forte).

**E♭ Alto Saxophone  
E♭ Clarinet**

**Tune No. 188**

**Marcia**

*mf*

**Tune No. 189**

**Moderato**

*dolce*  
*mp*

**Tune No. 190**

**Tempo Di Bolero**

*mf*

Coda

D.C. al Coda

**Tune No. 191**

**Allegro**

*mp*

**E♭ Alto Saxophone  
E♭ Clarinet**

**Tune No. 192**

*Dolce*

Musical notation for Tune No. 192, featuring two staves in 6/8 time with a key signature of two sharps (F# and C#). The first staff begins with a dynamic marking of *mp* and includes a hairpin crescendo. The second staff continues the melody with various articulations and phrasing.

**Tune No. 193**

*Ala Ho-Down*

Musical notation for Tune No. 193, featuring two staves in 2/4 time with a key signature of two sharps (F# and C#). The first staff begins with a dynamic marking of *f* and includes accents. The second staff continues the melody with various articulations and phrasing.

**Tune No. 194**

*Marcia*

Musical notation for Tune No. 194, featuring two staves in 2/4 time with a key signature of two sharps (F# and C#). The first staff begins with a dynamic marking of *f* and includes triplets. The second staff continues the melody with various articulations and phrasing.

**Tune No. 195**

*Tenderly*

Musical notation for Tune No. 195, featuring two staves in 6/8 time with a key signature of two flats (B♭ and E♭). The first staff begins with a dynamic marking of *mp* and includes a hairpin crescendo. The second staff continues the melody with various articulations and phrasing, ending with a *Rit.* marking.

**Tune No. 196**

*Moderato*

Musical notation for Tune No. 196, featuring two staves in common time with a key signature of two sharps (F# and C#). The first staff begins with a dynamic marking of *mf*. The second staff continues the melody with various articulations and phrasing.

**E♭ Alto Saxophone  
E♭ Clarinet**

**Tune No. 197**

**Allegretto**

Two staves of musical notation for Tune No. 197. The first staff begins with a mezzo-forte (*mf*) dynamic and concludes with *mf*. The second staff concludes with a forte (*f*) dynamic.

**Tune No. 198**

**Allegro** ♩ = ♩

One staff of musical notation for Tune No. 198. The piece begins with a forte (*f*) dynamic.

**Tune No. 199**

**Tempo Di Valse**

Two staves of musical notation for Tune No. 199. The piece begins with a mezzo-piano (*mp*) dynamic.

**Tune No. 200**

**Andante**

Two staves of musical notation for Tune No. 200. The first staff begins with a mezzo-forte (*mf*) dynamic and includes a piano (*p*) dynamic marking. The second staff begins with a mezzo-forte (*mf*) dynamic.

**Tune No. 201**

**Turkish Dance**

Two staves of musical notation for Tune No. 201. The piece begins with a mezzo-forte (*mf*) dynamic.

**E♭ Alto Saxophone  
E♭ Clarinet**

**Tune No. 202**

**Polonaise**

*f*

Coda

D.C. al Coda

**Tune No. 203**

**Clown Dance**

Moderato

*f*

smear smeary

bend bend smeary bend bend

Vivace

gliss. slow

Ritard. *fff*

**Tune No. 204**

**Odd Meter**

*f*