

Clarinet Fingering Chart

	E	F	F# Gb	G	G# Ab	A	A# Bb
	B	C	C# Db	D	D# Eb	E	F
	G	G# Ab	A	A# Bb	B	C	
	C# Db	D	D# Eb	E	F	F# Gb	G
	A# Bb	B	C	C# Db	D	D# Eb	E
	F# Gb	G	G# Ab	A	A# Bb	B	C

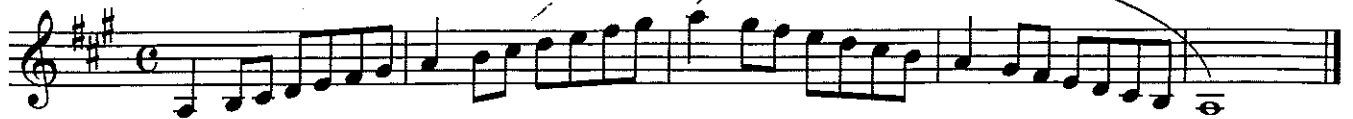
(When more than one fingering is shown, the first is the most common.)



ATSSB Junior High B \flat Clarinet Scales

All scales are to be played at a minimum $\text{♩} = 80$

1. Concert G (written A) Major



2. Concert C (written D) Major



3. Concert F (written G) Major



4. Concert B \flat (written C) Major



5. Concert E \flat (written F) Major



6. Concert A \flat (written B \flat) Major



7. Concert D \flat (written E \flat) Major



8. Chromatic



ATSSB B \flat Clarinet Scales

Scales should be performed as written. Scales may or may not be performed connected. All scales are to be played at a minimum of $\text{♩} = 120$

1. Concert G (written A) Major Scale



2. Concert C (written D) Major Scale



3. Concert F (written G) Major Scale



4. Concert B \flat (written C) Major Scale



5. Concert E \flat (written F) Major Scale



6. Concert A \flat (written B \flat) Major Scale

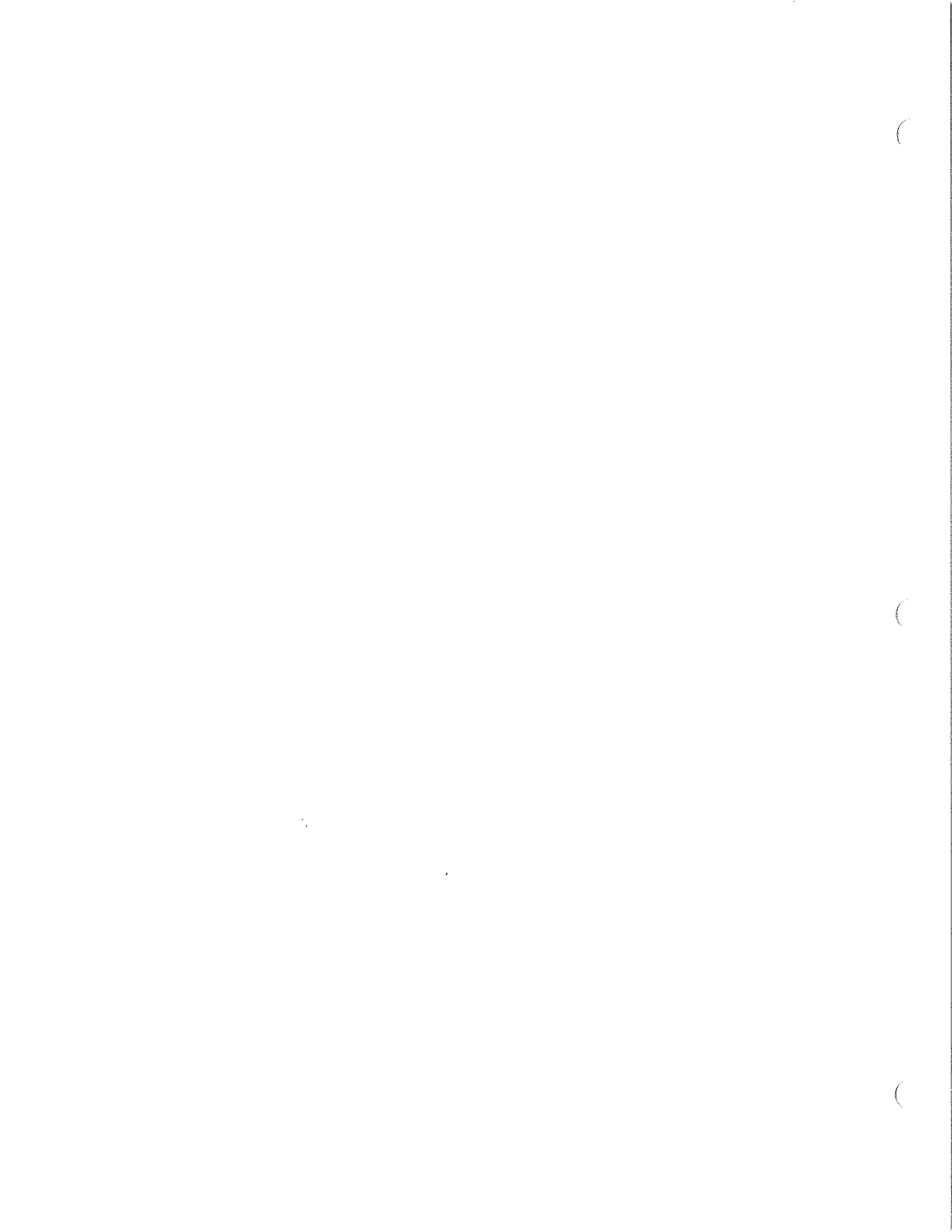


7. Concert D \flat (written E \flat) Major Scale



8. Chromatic Scale





Articulation Exercises

Articulations: A Study in Styles

Four connected quarter-notes (tenuto). The sound of one note "touches" the next note.

Four quarter-notes in "lifted" style. The attack is the same as tenuto, but the end of the note is tapered.

Four quarter-notes "lifted and short" (staccato). Separated and detached (half full value).

Eighth-notes in connected style.

Eighth-notes in lifted and short style.

Eighth-note triplets in connected style.

Eighth-note triplets in a detached style (bounced).

Sixteenth-notes in a connected style.

Articulation Exercise on Concert F

Warm-Up Set 1

Option 1 (unison "lip slur" with brass)

Musical notation for Option 1, consisting of three staves of music. The first staff contains measures 1-5, the second staff contains measures 6-10, and the third staff contains measures 11-14. The music features a series of eighth notes with slurs, indicating lip slurs.

Option 2 (unison register study with brass)

Musical notation for Option 2, consisting of three staves of music. The first staff contains measures 1-5, the second staff contains measures 6-10, and the third staff contains measures 11-14. The music features a series of eighth notes with slurs, indicating lip slurs.

Options 3, 4, & 5 (technical patterns with brass lip slurs)

Articulation Patterns: 1 2 3 4 5 6 7 8

Musical notation for Options 3, 4, & 5, consisting of four staves of music. The first staff contains measures 1-4, the second staff contains measures 5-8, the third staff contains measures 9-12, and the fourth staff contains measures 13-14. The music features a series of eighth notes with slurs, indicating lip slurs.

Warm-Up Set 2

Option 1 (unison "lip slur" with brass)

Musical notation for Option 1, consisting of three staves of music. The first staff starts on a C4 and moves up stepwise to G4. The second staff starts on a B3 and moves up stepwise to F4. The third staff starts on an E3 and moves up stepwise to B3. Each staff contains 14 measures with slurs under groups of notes.

Option 2 (unison register study with brass)

Musical notation for Option 2, consisting of three staves of music. Each staff contains 14 measures with long slurs spanning across measures. The first staff starts on a C4, the second on a B3, and the third on an E3.

Options 3, 4, & 5 (technical patterns with brass lip slurs)

Articulation Patterns: 1 2 3 4 5 6 7 8

Musical notation for Options 3, 4, & 5, consisting of four staves of music. Each staff contains 14 measures of eighth-note patterns with slurs. The first staff starts on a C4, the second on a B3, the third on an E3, and the fourth on a D3.

Warm-Up Set 3

Option 1 (unison "lip slur" with brass)

Option 2 (unison register study with brass)

Options 3, 4, & 5 (technical patterns with brass lip slurs)

Articulation Patterns: 

Warm-Up Set 4

Option 1 (unison "lip slur" with brass)

Option 2 (unison register study with brass)

Options 3, 4, & 5 (technical patterns with brass lip slurs)

Articulation Patterns:

Technical Exercises in the Key of C (Concert Bb)

Major Scale

Musical notation for the Major Scale exercise in C major. It consists of two staves. The first staff contains an ascending scale starting on C4, followed by a descending scale. The second staff contains a descending scale starting on C5, followed by an ascending scale. Both staves end with a final cadence on C4.

Natural Minor

Musical notation for the Natural Minor scale exercise in C minor. It consists of two staves. The first staff contains an ascending scale starting on C4, followed by a descending scale. The second staff contains a descending scale starting on C5, followed by an ascending scale. Both staves end with a final cadence on C4.

Harmonic Minor

Musical notation for the Harmonic Minor scale exercise in C minor. It consists of two staves. The first staff contains an ascending scale starting on C4, followed by a descending scale. The second staff contains a descending scale starting on C5, followed by an ascending scale. Both staves end with a final cadence on C4.

Melodic Minor

Musical notation for the Melodic Minor scale exercise in C minor. It consists of two staves. The first staff contains an ascending scale starting on C4, followed by a descending scale. The second staff contains a descending scale starting on C5, followed by an ascending scale. Both staves end with a final cadence on C4.

Mini-Scale & Tonic Arpeggio

Musical notation for the Mini-Scale & Tonic Arpeggio exercise. It consists of two staves. The first staff contains a mini-scale starting on C4, followed by a tonic arpeggio. The second staff contains a descending mini-scale starting on C5, followed by an ascending tonic arpeggio. A note in the first staff is circled with the text "(also practice 8va w/cue note)".

Scale Pattern 1 *articulations: 1 2 3 4 5 6 7 8

Musical notation for Scale Pattern 1. It consists of two staves. The first staff contains a series of eighth-note patterns with articulation marks (1-8) above them. The second staff contains a series of eighth-note patterns with articulation marks (1-8) below them.

*Scale Pattern 2**

Musical notation for Scale Pattern 2* in C major, 4/4 time. The piece consists of two staves. The right staff features a melodic line with eighth-note patterns, and the left staff features a bass line with eighth-note patterns. The piece concludes with a final whole note chord in the right hand.

*Scale in Thirds**

Musical notation for Scale in Thirds* in C major, 4/4 time. The piece consists of two staves. The right staff features a melodic line with eighth-note patterns, and the left staff features a bass line with eighth-note patterns. The piece concludes with a final whole note chord in the right hand.

Interval Study

Musical notation for Interval Study in C major, 4/4 time. The piece consists of a single staff with a melodic line featuring eighth-note patterns and intervals.

Triads of the C Scale

Musical notation for Triads of the C Scale in C major, 4/4 time. The piece consists of a single staff with a melodic line featuring eighth-note patterns and intervals, labeled with Roman numerals I through VII.

*Chord Study 1**

Musical notation for Chord Study 1* in C major, 4/4 time. The piece consists of two staves. The right staff features a melodic line with eighth-note patterns, and the left staff features a bass line with eighth-note patterns. The piece concludes with a final whole note chord in the right hand.

Chord Study 2 - articulations:

Musical notation for Chord Study 2 - articulations in C major, 4/4 time. The piece consists of two staves. The right staff features a melodic line with eighth-note patterns and articulations, and the left staff features a bass line with eighth-note patterns. The piece concludes with a final whole note chord in the right hand.

Technical Exercises in the Key of F (Concert Eb)

Major Scale

Natural Minor

Harmonic Minor

Melodic Minor

Mini-Scale & Tonic Arpeggio

Scale Pattern 1 *articulations:

Scale Pattern 2*

Musical notation for Scale Pattern 2* in F major, 4/4 time. The piece consists of two staves. The upper staff contains a melodic line with eighth-note patterns, and the lower staff contains a bass line with eighth-note patterns. A note in the upper staff is marked with a circled '8va' and the text "(also practice 8va)".

Scale in Thirds*

Musical notation for Scale in Thirds* in F major, 4/4 time. The piece consists of two staves. The upper staff contains a melodic line with eighth-note patterns, and the lower staff contains a bass line with eighth-note patterns. A note in the upper staff is marked with a circled '8va' and the text "(also practice 8va)".

Interval Study

Musical notation for Interval Study in F major, 4/4 time. The piece consists of a single staff with eighth-note patterns.

Triads of the F Scale

Musical notation for Triads of the F Scale in F major, 4/4 time. The piece consists of a single staff with eighth-note patterns. The triads are labeled with Roman numerals I through VII.

Chord Study 1*

Musical notation for Chord Study 1* in F major, 4/4 time. The piece consists of two staves. The upper staff contains a melodic line with eighth-note patterns, and the lower staff contains a bass line with eighth-note patterns. The piece is divided into six measures, numbered 1 through 6.

Chord Study 2 - articulations:

Musical notation for Chord Study 2 - articulations in F major, 4/4 time. The piece consists of two staves. The upper staff contains a melodic line with eighth-note patterns, and the lower staff contains a bass line with eighth-note patterns. The piece is divided into five measures, numbered 1 through 5. The first measure is marked with a circled '1' and the second with a circled '2'. The upper staff has a circled '3' above the first measure and a circled '3' above the second measure. The lower staff has a circled '1' below the first measure and a circled '2' below the second measure.

Technical Exercises in the Key of B \flat (Concert A \flat)

Major Scale

Natural Minor

Harmonic Minor

Melodic Minor

Mini-Scale & Tonic Arpeggio

Scale Pattern 1 *articulations:

Scale Pattern 2*

Musical notation for Scale Pattern 2* in B-flat major, 4/4 time. The piece consists of two staves. The upper staff features a melodic line with eighth-note patterns, and the lower staff features a bass line with eighth-note patterns. A note in the upper staff is marked with the instruction "(also practice 8va)".

Scale in Thirds*

Musical notation for Scale in Thirds* in B-flat major, 4/4 time. The piece consists of two staves. The upper staff plays a scale of thirds, and the lower staff plays a scale of sixths.

Interval Study

Musical notation for Interval Study in B-flat major, 4/4 time. The piece consists of a single staff with a sequence of eighth-note intervals.

Triads of the B \flat Scale

Musical notation for Triads of the B \flat Scale in B-flat major, 4/4 time. The piece consists of a single staff showing seven triads labeled I through vii^o.

Chord Study 1*

Musical notation for Chord Study 1* in B-flat major, 4/4 time. The piece consists of two staves. The upper staff features six measures of chords with eighth-note patterns, numbered 1 through 6. The lower staff features a bass line with eighth-note patterns.

Chord Study 2 - articulations:

Musical notation for Chord Study 2 - articulations in B-flat major, 4/4 time. The piece consists of two staves. The upper staff features six measures of chords with eighth-note patterns, numbered 1 through 6, with articulation marks above the notes. The lower staff features a bass line with eighth-note patterns, numbered 1 through 5.

Technical Exercises in the Key of E \flat (Concert D \flat)

Major Scale

Natural Minor

Harmonic Minor

Melodic Minor

Mini-Scale & Tonic Arpeggio

Scale Pattern 1 * articulations: $\overset{1}{\text{trill}}$ $\overset{2}{\text{trill}}$ $\overset{3}{\text{trill}}$ $\overset{4}{\text{trill}}$ $\overset{5}{\text{trill}}$ $\overset{6}{\text{trill}}$ $\overset{7}{\text{trill}}$ $\overset{8}{\text{trill}}$

Scale Pattern 2*

Two staves of music in E-flat major, 4/4 time. The top staff features a sequence of eighth-note patterns: a quarter rest followed by eighth notes, eighth notes followed by a quarter rest, and eighth notes followed by a quarter rest. The bottom staff provides a steady eighth-note accompaniment.

Scale in Thirds*

Two staves of music in E-flat major, 4/4 time. The top staff plays a scale in thirds, alternating between eighth and quarter notes. The bottom staff provides a steady eighth-note accompaniment.

Interval Study

A single staff of music in E-flat major, 4/4 time, showing a sequence of intervals: eighth notes, quarter notes, and eighth notes.

Triads of the E \flat Scale

A single staff of music in E-flat major, 4/4 time, showing seven triads labeled I through vii⁰. Each triad is played in a specific rhythmic pattern.

Chord Study 1*

Two staves of music in E-flat major, 4/4 time. The top staff features six measures of eighth-note patterns, numbered 1 through 6. The bottom staff provides a steady eighth-note accompaniment.

Chord Study 2 - articulations:

Two staves of music in E-flat major, 4/4 time. The top staff features six measures of eighth-note patterns with articulation marks (accents) above the notes, numbered 1 through 6. The bottom staff provides a steady eighth-note accompaniment.

Scale Pattern 2*

Musical notation for Scale Pattern 2* in G major, 4/4 time. The piece consists of two staves. The upper staff features a melodic line with eighth-note patterns, and the lower staff provides a bass line with eighth-note accompaniment. A note in the first measure of the upper staff is marked with the instruction "(also practice 8va)".

Scale in Thirds*

Musical notation for Scale in Thirds* in G major, 4/4 time. The piece consists of two staves. The upper staff plays a scale in thirds, and the lower staff plays a scale in sixths, providing harmonic support.

Interval Study

Musical notation for Interval Study in G major, 4/4 time. The piece consists of a single staff with a melodic line of eighth notes, focusing on intervallic relationships.

Triads of the G Scale

Musical notation for Triads of the G Scale in G major, 4/4 time. The piece consists of a single staff showing seven triads labeled with Roman numerals: I, ii, iii, IV, V, vi, and vii^o.

Chord Study 1*

Musical notation for Chord Study 1* in G major, 4/4 time. The piece consists of two staves. The upper staff features six measures of chords, each with a number (1-6) above it. The lower staff provides a bass line with eighth-note accompaniment.

Chord Study 2 - articulations:

Musical notation for Chord Study 2 - articulations in G major, 4/4 time. The piece consists of two staves. The upper staff features six measures of chords with articulation marks (accents) above them, and the lower staff provides a bass line with eighth-note accompaniment.

Technical Exercises in the Key of A (Concert G)

Major Scale

Natural Minor

Harmonic Minor

Melodic Minor

Mini-Scale & Tonic Arpeggio

Scale Pattern 1 *articulations:

Scale Pattern 2*

Musical notation for Scale Pattern 2* in A major, 4/4 time. The piece consists of two staves. The upper staff features a melodic line with eighth-note patterns, and the lower staff features a bass line with eighth-note patterns. A note in the upper staff is marked with the instruction "(also practice 8va)".

Scale in Thirds*

Musical notation for Scale in Thirds* in A major, 4/4 time. The piece consists of two staves. The upper staff features a melodic line with eighth-note patterns, and the lower staff features a bass line with eighth-note patterns, illustrating the scale in thirds.

Interval Study

Musical notation for Interval Study in A major, 4/4 time. The piece consists of a single staff with eighth-note patterns, focusing on interval training.

Triads of the A Scale

Musical notation for Triads of the A Scale in A major, 4/4 time. The piece consists of a single staff showing the first seven triads of the scale, labeled I through vii^o.

Chord Study 1*

Musical notation for Chord Study 1* in A major, 4/4 time. The piece consists of two staves. The upper staff features a melodic line with eighth-note patterns, and the lower staff features a bass line with eighth-note patterns. The study is divided into six measures, numbered 1 through 6.

Chord Study 2 - articulations:

Musical notation for Chord Study 2 - articulations in A major, 4/4 time. The piece consists of two staves. The upper staff features a melodic line with eighth-note patterns, and the lower staff features a bass line with eighth-note patterns. The study is divided into four measures, numbered 1 through 4. The first measure is marked with a '1' above the staff, and the subsequent measures are marked with '3' above the staff, indicating articulation points.

Chorale 6 (full band)

Musical score for Chorale 6 (full band) in 3/4 time, marked *mf*. The score consists of two staves. The first staff is labeled "Cl 1/2" and contains measures 1 through 4. The second staff contains measures 5 through 8. The music features a melody in the upper voice with accompaniment in the lower voice.

Chorale Melody on America

Musical score for Chorale Melody on America in 3/4 time, marked *mf*. The score is arranged for three parts: Subdivision, Chorale Melody, and Bopped. The Subdivision part is a single melodic line. The Chorale Melody part is a single melodic line. The Bopped part is a rhythmic accompaniment consisting of eighth notes. The score consists of two systems. The first system contains measures 1 through 3. The second system contains measures 4 through 6, with the final measure marked "(cadence)".

America (full band)

Musical score for America (full band) in 3/4 time, marked *mf*. The score consists of three staves. The first staff is labeled "Cl 1/2" and contains measures 1 through 5. The second staff contains measures 6 through 10. The third staff contains measures 11 through 14. The music features a melody in the upper voice with accompaniment in the lower voice.

Chorale & Tuning Exercises in B \flat (Concert A \flat)

Interval Tuning

1 Intervals from tonic (major 3rd, perfect 4th, perfect 5th)

Chord Tuning

All Through the Night (full band)

Chorale 2 (full band)

Musical score for Chorale 2 (full band) in C major, 4/4 time. The score consists of two staves. The first staff is for Clarinet in C (Cl 1/2) and starts with a dynamic marking of *mf*. The second staff continues the melody and includes a *ritard* marking. The piece is divided into measures 1 through 8, with measure numbers 1, 2, 3, 4, 5, 6, 7, and 8 indicated above the notes.

Chorale Melody on Chester

Musical score for Chorale Melody on Chester in C major, 4/4 time. The score consists of three staves: Subdivision, Chorale Melody, and Bopped. The Subdivision and Chorale Melody staves start with a dynamic marking of *mf*. The Bopped staff features a rhythmic accompaniment. The piece is divided into measures 1 through 8, with measure numbers 1, 2, 3, 4, 5, 6, 7, and 8 indicated above the notes. The final measure (8) is marked as a cadence.

Chester (full band)

Musical score for Chester (full band) in C major, 4/4 time. The score consists of four staves for Clarinet in C (Cl 1/2). The dynamic markings are *mf* for measures 1-4, *mp* for measures 9-12, *mf* for measures 13-15, and *f* for measure 16. The piece is divided into measures 1 through 16, with measure numbers 1, 2, 3, 4, 5, 6, 7, 8, 9, 10, 11, 12, 13, 14, 15, and 16 indicated above the notes.

Chorale 4 (full band)

Musical score for Chorale 4 (full band) for Clarinet 1/2 (Cl 1/2). The score is in G major (one sharp) and common time (C). It consists of two staves of music. The first staff contains measures 1 through 4, and the second staff contains measures 5 through 8. The dynamic marking is *mf*. Measure numbers 1 through 8 are indicated above the notes.

Chorale Melody on Bach 95

Musical score for Chorale Melody on Bach 95. It features three staves: Subdivision, Chorale Melody, and Bopped. The key signature is G major (one sharp) and the time signature is common time (C). The dynamic marking is *mf*. The score is divided into two systems. The first system contains measures 1 through 4, and the second system contains measures 5 through 8. The word "(cadence)" is written above the end of each system. Measure numbers 1 through 8 are indicated above the notes.

Bach 95 (full band)

Musical score for Bach 95 (full band) for Clarinet 1/2 (Cl 1/2). The score is in G major (one sharp) and common time (C). It consists of three staves of music. The first staff contains measures 1 through 4, the second staff contains measures 5 through 8, and the third staff contains measures 9 through 12. The dynamic marking is *mf*. Measure numbers 1 through 12 are indicated above the notes.