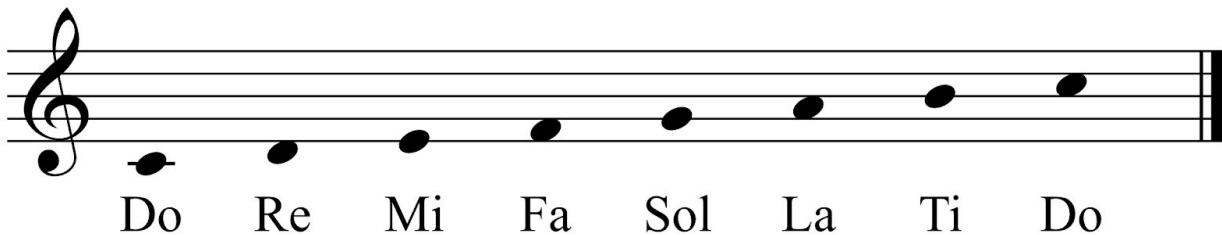


Solfege and Scale Degrees

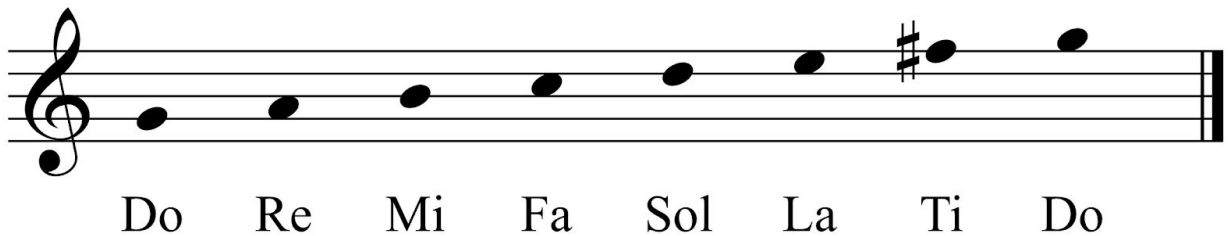
Now that you know your keys and scales, we can name all of the notes in a key. We have three ways of labeling pitches inside a key.

Solfege

The version of solfege we use moves Do to always be the keynote. So here is our solfege for the notes in C major.

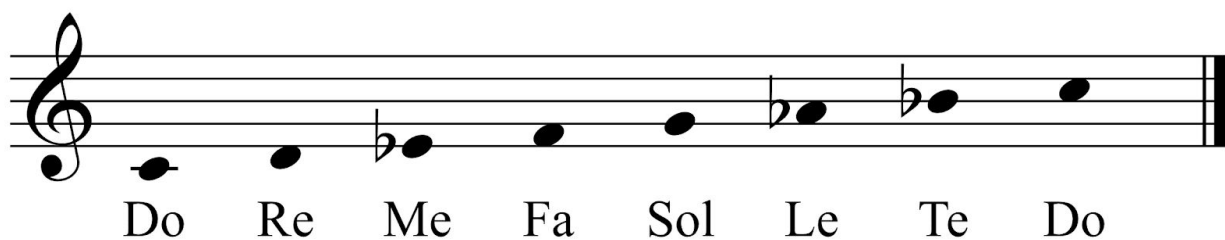


And here it is in G major.



And so forth.

For minor, since the third, sixth, and seventh notes change, we have different syllables for the changing notes. Here is the solfege for C natural minor.



The vowels for Me, Le, and Te match the sound for Re (so they sound like May, Lay, and Tay). The raised pitches in harmonic and natural minor match La and Ti in the major scale.