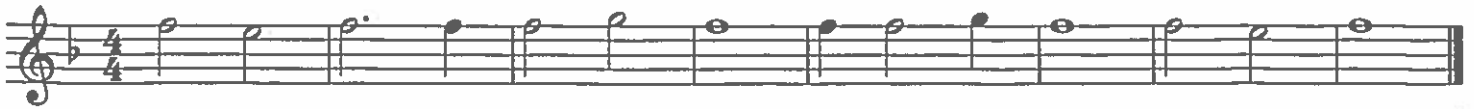


204 Progressive Sight Reading Tunes

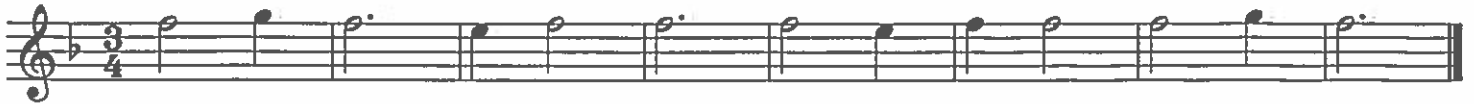
Bb Tenor Sax

Tune No. 1

Roger Winslow



Tune No. 2



Tune No. 3



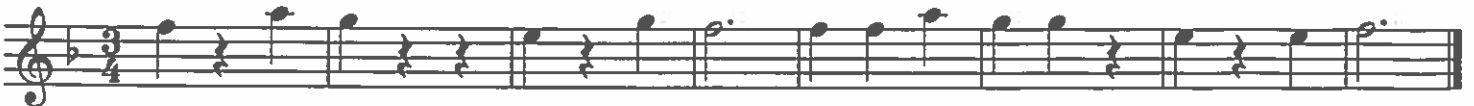
Tune No. 4



Tune No. 5



Tune No. 6



Tune No. 7



Tune No. 8



Bb Tenor Sax

Tune No. 9



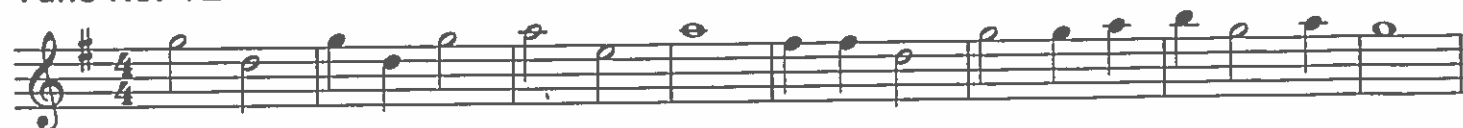
Tune No. 10



Tune No. 11



Tune No. 12



Tune No. 13



Tune No. 14



Tune No. 15



Tune No. 16



Bb Tenor Sax

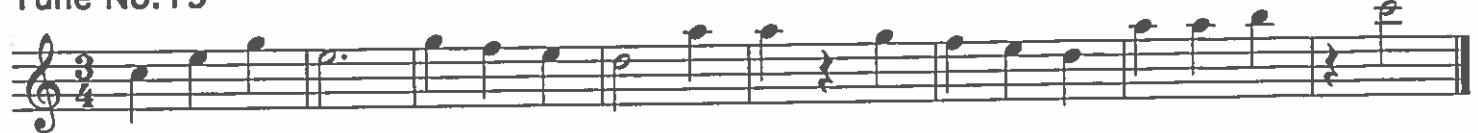
Tune No. 17



Tune No. 18



Tune No. 19



Tune No. 20



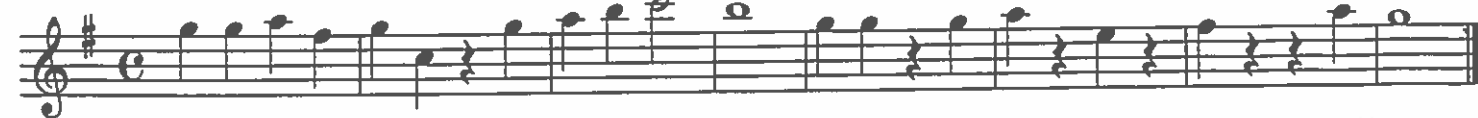
Tune No. 21



Tune No. 22



Tune No. 23



Tune No. 24



Bb Tenor Sax

Tune No. 25



Tune No. 26



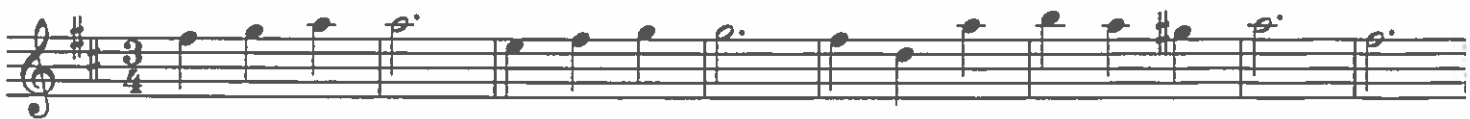
Tune No. 27



Tune No. 28



Tune No. 29



Tune No. 30



Bb Tenor Sax

Tune No. 31



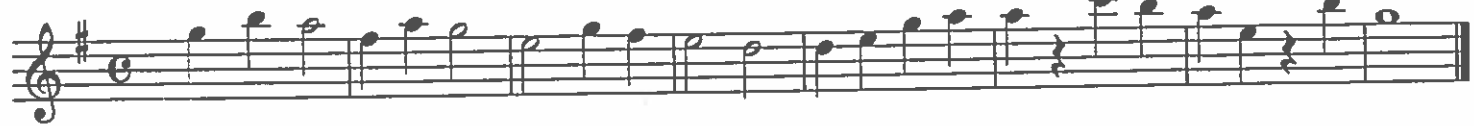
Tune No. 32



Tune No. 33



Tune No. 34



Tune No. 35



Tune No. 36



Tune No. 37



Tune No. 38



Bb Tenor Sax

Tune No. 39



Tune No. 40



Tune No. 41



Tune No. 42



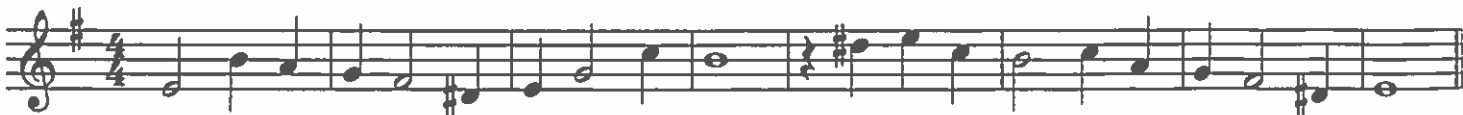
Tune No. 43



Tune No. 44



Tune No. 45



Tune No. 46



Bb Tenor Sax

Tune No. 47

Musical notation for Tune No. 47, consisting of two staves. The first staff is in treble clef, key of D major (one sharp), and 3/4 time. It features a melodic line with eighth and quarter notes, including slurs and a fermata. The second staff continues the melody with a flat sign (Bb) and concludes with a double bar line.

Tune No. 48

Musical notation for Tune No. 48, consisting of three staves. The first staff is in treble clef, key of D major (one sharp), and common time (C). It features a melodic line with quarter notes and rests. The second and third staves continue the melody with various rhythmic patterns and conclude with a double bar line.

Tune No. 49

Musical notation for Tune No. 49, consisting of two staves. The first staff is in treble clef, key of Bb major (two flats), and common time (C). It features a melodic line with quarter notes and rests. The second staff continues the melody and concludes with a double bar line.

Tune No. 50

Musical notation for Tune No. 50, consisting of two staves. The first staff is in treble clef, key of D major (one sharp), and common time (C). It features a melodic line with quarter notes and rests. The second staff continues the melody and concludes with a double bar line.

Coda

D.C. al Coda

push'n

Bb Tenor Sax

Tune No. 51

Musical notation for Tune No. 51, consisting of three staves of music in 4/4 time. The first staff begins with a treble clef, a key signature of one flat (Bb), and a common time signature (C). The melody consists of quarter and eighth notes, with a key signature change to two flats (Bb and Eb) in the second measure of the second staff. The piece concludes with a double bar line.

Tune No. 52

Musical notation for Tune No. 52, consisting of three staves of music in 4/4 time. The first staff begins with a treble clef, a key signature of one flat (Bb), and a common time signature (C). The melody is primarily composed of quarter notes. The key signature changes to two flats (Bb and Eb) in the second measure of the second staff. The piece concludes with a double bar line.

Tune No. 53

Musical notation for Tune No. 53, consisting of three staves of music in 3/4 time. The first staff begins with a treble clef, a key signature of one flat (Bb), and a 3/4 time signature. The melody starts with a *mf* dynamic marking. The piece concludes with a double bar line.

Felt 8

Tenor Saxophone

Tune No. 54

Musical notation for Tune No. 54, featuring a treble clef, a key signature of one sharp (F#), and a 4/4 time signature. The melody begins with a mezzo-forte (*mf*) dynamic. The piece consists of a single line of music with various note values and rests.

Tune No. 55

Musical notation for Tune No. 55, featuring a treble clef, a key signature of one sharp (F#), and a 3/4 time signature. The melody begins with a forte (*f*) dynamic. The piece consists of a single line of music with various note values and rests.

Tune No. 56

Musical notation for Tune No. 56, featuring a treble clef, a key signature of one flat (Bb), and a 3/4 time signature. The melody begins with a forte (*f*) dynamic. The piece consists of a single line of music with various note values and rests.

Tune No. 57

Musical notation for Tune No. 57, featuring a treble clef, a key signature of one sharp (F#), and a 4/4 time signature. The melody begins with a forte (*f*) dynamic. The piece consists of a single line of music with various note values and rests.

Tune No. 58

Musical notation for Tune No. 58, featuring a treble clef, a key signature of one sharp (F#), and a 3/4 time signature. The melody begins with a mezzo-forte (*mf*) dynamic. The piece consists of a single line of music with various note values and rests.

Tune No. 59

Musical notation for Tune No. 59, featuring a treble clef, a key signature of one flat (Bb), and a 4/4 time signature. The melody begins with a forte (*f*) dynamic. The piece consists of a single line of music with various note values and rests.

Tune No. 60

Musical notation for Tune No. 60, featuring a treble clef, a key signature of one flat (Bb), and a common time (C) signature. The melody begins with a forte (*f*) dynamic. The piece consists of a single line of music with various note values and rests.

Tune No. 61

Musical notation for Tune No. 61, featuring a treble clef, a key signature of one sharp (F#), and a 3/4 time signature. The melody begins with a forte (*f*) dynamic. The piece consists of a single line of music with various note values and rests.

Tune No. 62

Musical notation for Tune No. 62, featuring a treble clef, a key signature of one sharp (F#), and a 4/4 time signature. The melody begins with a forte (*f*) dynamic. The piece consists of a single line of music with various note values and rests.

F# 10

Tenor Saxophone

Tune No. 63



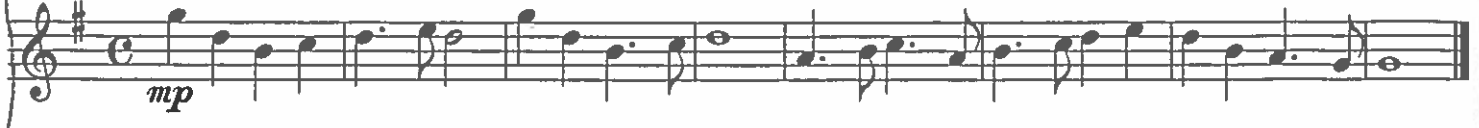
f

Tune No. 64



mf

Tune No. 65



mp

Tune No. 66



f

ff

F# 15

Tune No. 67



f

Tune No. 68



f



Tune No. 69



mf

Tune No. 70



f



Tenor Saxophone

Tune No. 71

Musical notation for Tune No. 71, consisting of two staves. The first staff begins with a treble clef, a key signature of two flats (B-flat and E-flat), and a common time signature (C). The music starts with a dynamic marking of *mf*. The melody is written in a single line on a five-line staff.

Tune No. 72

Legato

Musical notation for Tune No. 72, consisting of four staves. The first staff begins with a treble clef, a key signature of two sharps (F# and C#), and a common time signature (C). The music starts with a dynamic marking of *mp*. The melody is written in a single line on a five-line staff, with a *Legato* instruction.

Tune No. 73

Dolce

Musical notation for Tune No. 73, consisting of four staves. The first staff begins with a treble clef, a key signature of two flats (B-flat and E-flat), and a 3/4 time signature. The music starts with a dynamic marking of *mp*. The melody is written in a single line on a five-line staff, with a *Dolce* instruction.

Tenor Saxophone

Tune No. 74

Expressively

mf

Coda

D.C. al \oplus Coda

Tune No. 75

Ballad

mf

Tune No. 76

Waltz

mp

Tune No. 77

Spritly

mf

Tenor Saxophone

Tune No. 78

Sweetly

Two staves of musical notation for Tune No. 78. The first staff begins with a treble clef, a key signature of one sharp (F#), and a 3/4 time signature. The melody is marked with a piano (*p*) dynamic. The second staff continues the melody with a repeat sign at the end.

Tune No. 79

In One

A single staff of musical notation for Tune No. 79. It features a treble clef, a key signature of one flat (Bb), and a 3/4 time signature. The melody is marked with a mezzo-forte (*mf*) dynamic and ends with a repeat sign.

Tune No. 80

Slowly

Two staves of musical notation for Tune No. 80. The first staff has a treble clef, a key signature of one flat (Bb), and a 3/4 time signature. The melody is marked with a mezzo-piano (*mp*) dynamic. The second staff continues the melody with a repeat sign at the end.

Tune No. 81

Liltingly

Two staves of musical notation for Tune No. 81. The first staff has a treble clef, a key signature of two flats (Bb, Eb), and a 3/4 time signature. The melody is marked with a mezzo-forte (*mf*) dynamic. The second staff continues the melody with a repeat sign at the end.

Tune No. 82

Broadly

Two staves of musical notation for Tune No. 82. The first staff has a treble clef, a key signature of one flat (Bb), and a 4/4 time signature. The melody is marked with a forte (*f*) dynamic. The second staff continues the melody with a repeat sign at the end.

Tenor Saxophone

Tune No. 83

Slow Valse



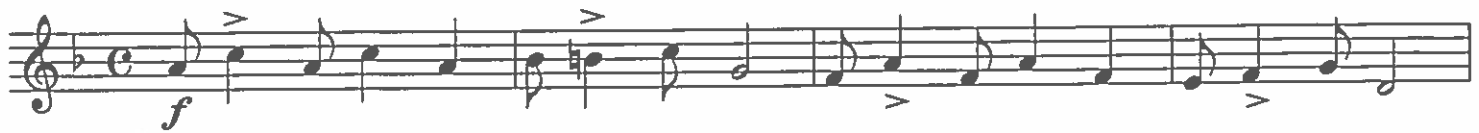
Tune No. 84

Lightly in 2



Tune No. 85

Moderato



Tune No. 86

Andante



Tune No. 87

Marcia



Tenor Saxophone

Tune No. 88

Andante

mp *Rit.*

Tune No. 89

Lively

f

Tune No. 90

Moderato

mf

Tune No. 91

Tenderly

p

Tune No. 92

March

f

Tenor Saxophone

Tune No. 93

Musical score for Tune No. 93, featuring three staves of music in 3/4 time. The key signature has one flat (B-flat). The first staff begins with a dynamic marking of *mf*. The music consists of eighth and quarter notes with various articulations such as accents and slurs.

Tune No. 94

Minuet

Musical score for Tune No. 94, Minuet, featuring two staves of music in 3/4 time. The key signature has one sharp (F#). The first staff begins with a dynamic marking of *mp*. The piece includes first and second endings, indicated by bracketed lines and repeat signs.

Tune No. 95

In 2

Musical score for Tune No. 95, In 2, featuring two staves of music in 6/8 time. The key signature has one sharp (F#). The first staff begins with a dynamic marking of *f*. The music is characterized by eighth and sixteenth notes.

Tune No. 96

In 2

Musical score for Tune No. 96, In 2, featuring two staves of music in 6/8 time. The key signature has one sharp (F#). The first staff begins with a dynamic marking of *mf*. The music features a mix of eighth and sixteenth notes.

Tune No. 97

In 2

Musical score for Tune No. 97, In 2, featuring one staff of music in 6/8 time. The key signature has one sharp (F#). The staff begins with a dynamic marking of *mf*. The music is composed of eighth and sixteenth notes.

Tenor Saxophone

Tune No. 98

In 2

Two staves of musical notation for Tune No. 98. The first staff begins with a treble clef, a key signature of one flat (Bb), and a 6/8 time signature. The music consists of eighth and quarter notes. A mezzo-forte (*mf*) dynamic marking is placed below the first staff. The second staff continues the melody and concludes with a double bar line.

Tune No. 99

Allegretto

Two staves of musical notation for Tune No. 99. The first staff begins with a treble clef, a key signature of two flats (Bb, Eb), and a 2/4 time signature. The music features eighth and sixteenth notes. A mezzo-forte (*mf*) dynamic marking is placed below the first staff. The second staff continues the melody and concludes with a double bar line.

Tune No. 100

Moderato

Two staves of musical notation for Tune No. 100. The first staff begins with a treble clef, a key signature of one sharp (F#), and a 6/8 time signature. The music consists of eighth and quarter notes. A mezzo-forte (*mf*) dynamic marking is placed below the first staff. The second staff continues the melody and concludes with a double bar line.

Tune No. 101

Andante

Two staves of musical notation for Tune No. 101. The first staff begins with a treble clef, a key signature of one sharp (F#), and a 3/4 time signature. The music consists of quarter and eighth notes. A piano (*p*) dynamic marking is placed below the first staff. The second staff continues the melody and concludes with a double bar line.

Tune No. 102

Slowly and Expressively

Two staves of musical notation for Tune No. 102. The first staff begins with a treble clef, a key signature of one sharp (F#), and a 3/4 time signature. The music consists of quarter and eighth notes. A piano (*p*) dynamic marking is placed below the first staff. The second staff continues the melody and concludes with a double bar line and a ritardando (*Rit.*) marking.

Bb Tenor Sax

Tune No. 103

Moderato



Tune No. 104

Sprightly



Tune No. 105

Andante Moderato



Tune No. 106

Marcia



Tune No. 107

Allegro Moderato



Tune No. 108

Sadly



Bb Tenor Sax

Tune No. 109

March Tempo

Two staves of musical notation for Tune No. 109. The first staff begins with a treble clef, a key signature of one flat (Bb), and a 6/8 time signature. The music is marked with a forte *f* dynamic. The second staff continues the melody.

Tune No. 110

Moderato

One staff of musical notation for Tune No. 110. The first staff begins with a treble clef, a key signature of one sharp (F#), and a 6/8 time signature. The music is marked with a mezzo-forte *mf* dynamic.

Tune No. 111

Moderately Fast

Two staves of musical notation for Tune No. 111. The first staff begins with a treble clef, a key signature of one flat (Bb), and a 6/8 time signature. The music is marked with a mezzo-forte *mf* dynamic.

Tune No. 112

Moderato

One staff of musical notation for Tune No. 112. The first staff begins with a treble clef, a key signature of one sharp (F#), and a 6/8 time signature. The music is marked with a mezzo-forte *mf* dynamic.

Tune No. 113

Marcia

Two staves of musical notation for Tune No. 113. The first staff begins with a treble clef, a key signature of one flat (Bb), and a common time signature (C). The music is marked with a forte *f* dynamic.

Tune No. 114

Allegretto

Two staves of musical notation for Tune No. 114. The first staff begins with a treble clef, a key signature of one flat (Bb), and a 4/4 time signature. The music is marked with a mezzo-forte *mf* dynamic.

Bb Tenor Sax

Tune No. 115

Allegro Moderato

mp

mf

Tune No. 116

Moderato (In 2)

mf

Tune No. 117

Spirited

f

Tune No. 118

Allegretto

mf

Bb Tenor Sax

Tune No. 119

Moderato

f

D.C. al Coda

Coda

Tune No. 120

Slow March

mf

Tune No. 121

Allegretto

mf

Tune No. 122

Andante

mf

Bb Tenor Sax

Tune No. 123

With Vigor

Musical notation for Tune No. 123, featuring three staves of music in treble clef with a key signature of one sharp (F#) and a common time signature (C). The first staff begins with a dynamic marking of *f*. The music consists of eighth and sixteenth notes, with some beamed eighth notes and a final quarter note on each staff.

Tune No. 124

Tempo Di Valse

Musical notation for Tune No. 124, featuring two staves of music in treble clef with a key signature of one sharp (F#) and a 3/4 time signature. The first staff begins with a dynamic marking of *mp*. The music features a waltz-like feel with dotted rhythms and flowing eighth notes.

Tune No. 125

Moderato

Musical notation for Tune No. 125, featuring two staves of music in treble clef with a key signature of two flats (Bb, Eb) and a 4/4 time signature. The first staff begins with a dynamic marking of *mf*. The music is in a moderate tempo with a mix of eighth and quarter notes.

Tune No. 126

Dolce

Musical notation for Tune No. 126, featuring three staves of music in treble clef with a key signature of one sharp (F#) and a 4/4 time signature. The first staff begins with a dynamic marking of *mp*. The music is in a dolce (sweet) style with long, flowing lines. The second staff ends with a *Rit.* marking, and the third staff begins with *a tempo* and ends with another *Rit.* marking.

Bb Tenor Sax

Tune No. 127

Joyously

Musical notation for Tune No. 127, Joyously. The piece is in C major and common time (C). It begins with a dynamic marking of *mf*. The melody is written on a single staff and consists of two lines of music. The first line starts with a quarter rest followed by a quarter note G4, then eighth notes A4, B4, C5, B4, A4, G4, F4, E4, D4, C4. The second line continues with eighth notes B3, A3, G3, F3, E3, D3, C3, B2, A2, G2, F2, E2, D2, C2.

Tune No. 128

Marcia

Musical notation for Tune No. 128, Marcia. The piece is in D major and 4/4 time. It begins with a dynamic marking of *mf*. The melody is written on a single staff and consists of three lines of music. The first line starts with a quarter note D4, then eighth notes E4, F4, G4, A4, B4, C5, B4, A4, G4, F4, E4, D4. The second line continues with eighth notes C4, B3, A3, G3, F3, E3, D3, C3, B2, A2, G2, F2, E2, D2. The third line continues with eighth notes C2, B1, A1, G1, F1, E1, D1, C1, B0, A0, G0, F0, E0, D0. A bracket labeled '1' spans the first two lines, and a bracket labeled 'Fine' spans the first two lines and the beginning of the third line.

Tune No. 129

Tempo Di Valse

Musical notation for Tune No. 129, Tempo Di Valse. The piece is in D major and 3/4 time. It begins with a dynamic marking of *mf*. The melody is written on a single staff and consists of three lines of music. The first line starts with a quarter note D4, then eighth notes E4, F4, G4, A4, B4, C5, B4, A4, G4, F4, E4, D4. The second line continues with eighth notes C4, B3, A3, G3, F3, E3, D3, C3, B2, A2, G2, F2, E2, D2. The third line continues with eighth notes C2, B1, A1, G1, F1, E1, D1, C1, B0, A0, G0, F0, E0, D0.

Tune No. 130

Slowly and Legato

Musical notation for Tune No. 130, Slowly and Legato. The piece is in D major and 4/4 time. It begins with a dynamic marking of *mp*. The melody is written on a single staff and consists of two lines of music. The first line starts with a quarter note D4, then eighth notes E4, F4, G4, A4, B4, C5, B4, A4, G4, F4, E4, D4. The second line continues with eighth notes C4, B3, A3, G3, F3, E3, D3, C3, B2, A2, G2, F2, E2, D2.

Tenor Saxophone

Tune No. 131

Lively

mf

Tune No. 132

Marcia

f

Tune No. 133

Andante

mf

Tune No. 134

Marcia

f

Coda

D.S.al ⊕ coda

Tune No. 135

Slowly and Expressively

mf

Tenor Saxophone

Tune No. 136

Lively

mf

Tune No. 137

Slowly and Expressively

mp

Tune No. 138

Allegro (In 6)

mf

Tune No. 139

Moderato

mp

Tenor Saxophone

Tune No. 140

Smoothly (One to the Bar)

Tune No. 141

Dolce

Tune No. 142

Allegro

Tune No. 143

Allegro Moderato

Tenor Saxophone

Tune No. 144

Alla Marcia

Musical notation for Tune No. 144, Alla Marcia. The piece is in 2/4 time and marked with a forte (*f*) dynamic. The key signature has one sharp (F#).

Tune No. 145

Lightly

Musical notation for Tune No. 145, Lightly. The piece is in 2/4 time and marked with a mezzo-piano (*mp*) dynamic. The key signature has two sharps (F# and C#).

Tune No. 146

Moderato

Musical notation for Tune No. 146, Moderato. The piece is in 2/4 time and marked with a mezzo-forte (*mf*) dynamic. The key signature has two sharps (F# and C#).

Tune No. 147

Moderato

Musical notation for Tune No. 147, Moderato. The piece is in 3/4 time and marked with a mezzo-forte (*mf*) dynamic. The key signature has one sharp (F#).

Tenor Saxophone

Tune No. 148

Moderato

Tune No. 149

Andante Expressivo

Tune No. 150

Slowly

Tune No. 151

Moderately Slow

Tenor Saxophone

Tune No. 152

Tempo Di Bolero

Musical score for Tune No. 152, Tempo Di Bolero, Tenor Saxophone. The score consists of five staves of music in 3/4 time, key of B-flat major. The first staff begins with a dynamic marking of *mf*. The music features a mix of eighth and sixteenth notes, often beamed together, with some notes marked with accents (>). The piece concludes with a double bar line.

Tune No. 153

Andante e Dolce

Musical score for Tune No. 153, Andante e Dolce, Tenor Saxophone. The score consists of three staves of music in 3/4 time, key of D major. The first staff begins with a dynamic marking of *mp*. The music is characterized by long, flowing lines with many slurs, indicating a slow and sweet tempo. The piece concludes with a double bar line.

Tune No. 154

Moderately (2 to the Bar)

Musical score for Tune No. 154, Moderately (2 to the Bar), Tenor Saxophone. The score consists of three staves of music in 6/8 time, key of D major. The first staff begins with a dynamic marking of *mf*. The music features a steady eighth-note pattern. The second and third staves contain double bar lines with a '2' above them, indicating a second ending. The piece concludes with a double bar line.

Tenor Saxophone

Tune No. 155

Andante e Legato

mf

Tune No. 156

Cossack Dance

Tune No. 157

Rubato

mp

Tune No. 158

Poignantly

mp

Tenor Saxophone

Tune No. 159

Lively

mf Coda
D.C. al Coda

Tune No. 160

Indian Dance

mf

Tune No. 161

Allegro

mf

Tune No. 162

2 to the Bar

f

Tune No. 163

Clog Dance

mf

Tenor Saxophone

Tune No. 164

Ragtime

Musical score for Tune No. 164, Ragtime, Tenor Saxophone. The score consists of four staves of music in 2/4 time. The first staff begins with a treble clef, a key signature of one flat (B-flat), and a dynamic marking of *mf*. The music features a rhythmic pattern of eighth and sixteenth notes with a syncopated feel characteristic of ragtime. The piece concludes with a double bar line.

Tune No. 165

Andante e Dolce

Musical score for Tune No. 165, Andante e Dolce, Tenor Saxophone. The score consists of three staves of music in 3/4 time. The first staff begins with a treble clef, a key signature of one sharp (F#), and a dynamic marking of *p*. The music is characterized by a slow, melodic line with long, sweeping phrases. The piece concludes with a double bar line.

Tune No. 166

Sadly

Musical score for Tune No. 166, Sadly, Tenor Saxophone. The score consists of two staves of music in 2/4 time. The first staff begins with a treble clef, a key signature of one sharp (F#), and a dynamic marking of *p*. The music is a slow, melancholic melody with long, sweeping phrases. The piece concludes with a double bar line.

Tenor Saxophone

Tune No. 167

Allegretto

Tune No. 168

Tempo Di Valse

Tune No. 169

Allegro Spirituoso

Tenor Saxophone

Tune No. 170 Andante Expressivo

mp

Tune No. 171 Gaily but not Fast

mf

Tune No. 172 Lively

f

Tune No. 173 With Spirit

Tenor Saxophone

Tune No. 174 Moderately Slow

dolce
mp

Tune No. 175 Boldy

f

Tune No. 176 Flowingly

mp

Tune No. 177 Lively

mf

Coda

D.S. al \oplus *Coda*

Tune No. 178 Moderato

mf

Tenor Saxophone

Tune No. 179

Allegretto

Tune No. 180

In 2 With Spirit

Tune No. 181

Allegretto

Tune No. 182

Andante

Tenor Saxophone

Tune No. 183

Slowly

p

Rit.

Tune No. 184

Allegro

mf

Tune No. 185

Andante Expressivo

mp

f

p

Tune No. 186

Moderate Waltz

mf

Tenor Saxophone

Tune No. 187

Smoothly

Musical score for Tune No. 187, Smoothly. The score consists of three staves of music in the key of D major (two sharps) and common time. The first staff begins with a dynamic marking of *p*. The second staff includes a dynamic marking of *mf*. The third staff features a dynamic marking of *f* and includes the instruction "Dim..... cresc.....".

Tune No. 188

Marcia

Musical score for Tune No. 188, Marcia. The score consists of three staves of music in the key of B-flat major (two flats) and 2/4 time. The first staff begins with a dynamic marking of *mf*. The music is characterized by a rhythmic, march-like quality with frequent eighth and sixteenth notes.

Tune No. 189

Moderato

Musical score for Tune No. 189, Moderato. The score consists of three staves of music in the key of D major (two sharps) and 3/4 time. The first staff begins with a dynamic marking of *mp* and includes the instruction "dolce". The music is characterized by a smooth, moderate tempo with a focus on melodic lines.

Tenor Saxophone

Tune No. 190

Tempo Di Bolero

mf

Coda

D.C. al Coda

Tune No. 191

Allegro

mp

Tune No. 192

Dolce

mp

Tune No. 193

Ala Ho-down

f

Tune 194

Marcia

f

Tenor Saxophone

Tune No. 195

Tenderly

mp Rit.

Tune No. 196

Moderato

mf

Tune No. 197

Allegretto

mf *mf* *f*

Tune No. 198

Allegro



f

Tune No. 199

Tempo Di Valse

mp

Tenor Saxophone

Tune No. 200

Andante

mf *p* *mf*
Ritard.

Tune No. 201

Turkish Dance

mf

Tune No. 202

Polonaise

f
Coda
D.C. al Coda

Tenor Saxophone

Tune No. 203

Clown Dance

smeary

smeary

bend bend smeary bend bend

Vivace

Ritard.

gliss.

slow

fff

Tune No. 204

Odd Meter

f

f

f

f