

Trombone Position Chart

Notes on gray background are pedal tones.

F	F# Gb	G	G# Ab	A	A# Bb
6	5	4	3	2	1

B	C	C# Db	D	D# Eb	E	F
Tb7 (lip down)	T7	T6	Tb4	Tb3	7 or T2	6 or T1

F# Gb	G	G# Ab	A	A# Bb	B	C
5	4 or Tb6	3 or T6	2 or Tb4	1 or Tb3	7 or Tb2	6 or T1

C# Db	D	D# Eb	E	F	F# Gb	G
5	4	3	2 or 7	1 or 6	5	4

G# Ab	A	A# Bb	B	C	C# Db
3 or 7	2 or 6	1 or #5	4 or b7	3 or b6	2 or b5

D	D# Eb	E	F	F# Gb	G
1 or b4	3 or #6	2 or #5	1 or #4 or 6	#3 or 5 or 7	#2 or 4 or 6

G# Ab	A	A# Bb	B	C	D
3 or 5 or 7	2 or 4 or 6	1 or 3 or 5	2 or 4	3 or b1 or 6	1 or b4

(When more than one position is shown, the first is the most common.)

Euphonium B.C. Fingering Chart

Automatic Compensating

Notes on gray background are pedal tones.

A \sharp	B \flat	B	C	C \sharp	D \flat	D
Open	1 2 3 4	1 3 4	2 3 4	1 2 4 or 3 4		

D \sharp	E \flat	E	F	F \sharp	G \flat	G	G \sharp	A \flat
1 4	2 4	4 or 1 3	2 3 or 1 2 3 4	1 2 or 3 or 1 3 4	1			

A	A \sharp	B \flat	B	C	C \sharp	D \flat	D
2	Open	2 4 or 1 2 3	4 or 1 3	2 3 or 2 3 4	1 2 or 3 or 1 2 4		

D \sharp	E \flat	E	F	F \sharp	G \flat	G	G \sharp	A \flat
1 or 1 4 or 1 2 3 4	2 or 1 2 3 or 2 4	Open or 1 3 or 4	2 3 or 1 2 4 or 1 2 3 4	1 2 or 3 or 1 4	1 or 1 2 3 or 2 4			

A	A \sharp	B \flat	B	C	C \sharp	D \flat
2 or 1 3 or 4	Open or 2 3 or 1 4	1 2 or 3 or 1 2 3 or 2 4	1 or 1 3 or 4 or 1 2 4	2 or 2 3 or 1 4 or 2 3 4		

D	D \sharp	E \flat	E	F	F \sharp	G \flat
Open or 1 2 or 3 or 1 2 3	1 or 1 3 or 4 or 1 4	2 or 1 2 3 or 2 3 or 2 4	Open or 1 3 or 4 or 1 2 or 3	2 3 or 1 or 1 2 3 or 2 4		

G	G \sharp	A \flat	A	A \sharp	B \flat	B	C
1 2 or 3 or 1 3 or 4	1 or 2 3 or 1 2 3 or 1 3 4	2 or 1 2 or 3 or 1 3	Open or 2 3 or 1 or 1 2 3	1 2 or 2	Open or 1 or 1 3 or 4		

(When more than one fingering is shown, the first is the most common.)

ATSSB Junior High Trombone & Baritone Scales

All scales to be played at a minimum $\text{♩} = 80$

1. Concert G Major



2. Concert C Major



3. Concert F Major



4. Concert Bb Major



5. Concert Eb Major



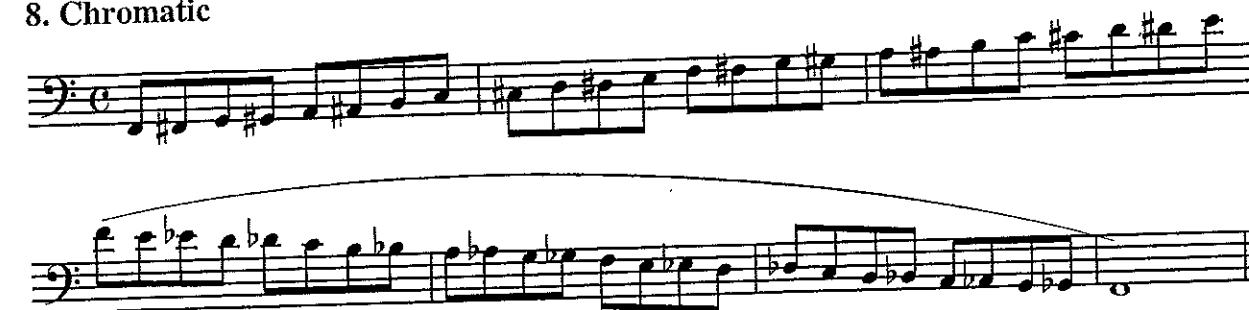
6. Concert Ab Major



7. Concert Db Major



8. Chromatic





ATSSB Junior High Trombone & Baritone Scales

All scales to be played at a minimum $\text{♩} = 80$

1. Concert G Major



2. Concert C Major



3. Concert F Major



4. Concert B♭ Major



5. Concert E♭ Major



6. Concert A♭ Major

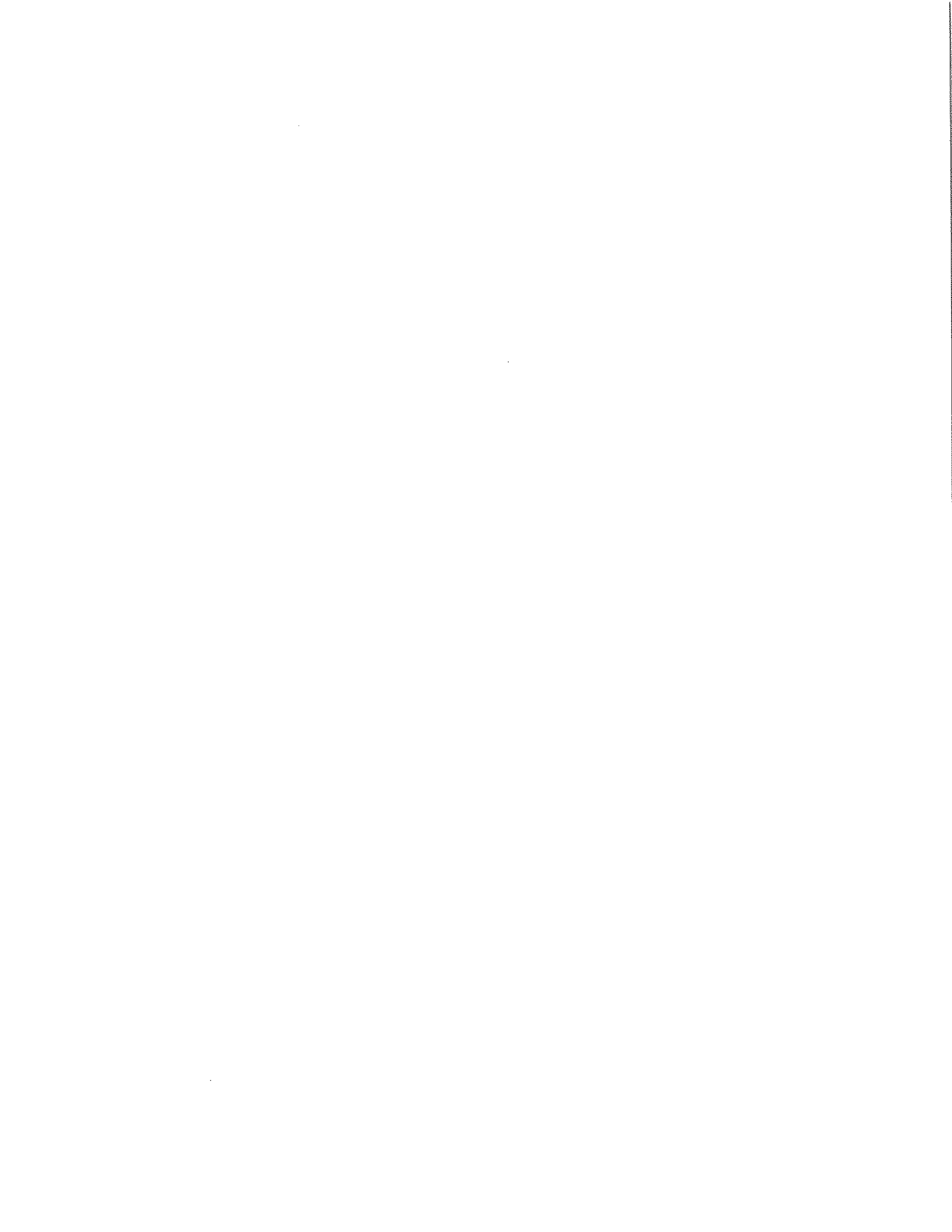


7. Concert D♭ Major



8. Chromatic





Articulations: A Study in Styles

Four connected quarter-notes (tenuto). The sound of one note "touches" the next note.

Four quarter-notes in "lifted" style. The attack is the same as tenuto, but the end of the note is tapered.

Four quarter-notes "lifted and short" (staccato). Separated and detached (half full value).

Musical notation showing four quarter notes on a staff. Below the staff are three rows of rectangular blocks representing articulation: the first row shows four connected blocks for tenuto; the second row shows four tapered blocks for lifted style; the third row shows four separated blocks for staccato style.

Eighth-notes in connected style.

Eighth-notes in lifted and short style.

Musical notation showing eighth notes on a staff. Below the staff are two rows of rectangular blocks: the first row shows connected blocks for eighth notes in connected style; the second row shows tapered and separated blocks for eighth notes in lifted and short style.

Eighth-note triplets in connected style.

Eighth-note triplets in a detached style (bounced).

Musical notation showing eighth-note triplets on a staff, each marked with a '3' above it. Below the staff are two rows of rectangular blocks: the first row shows connected blocks for eighth-note triplets in connected style; the second row shows tapered and separated blocks for eighth-note triplets in a detached style.

Sixteenth-notes in a connected style.

Musical notation showing sixteenth notes on a staff. Below the staff is one row of rectangular blocks representing sixteenth notes in a connected style.

Articulation Exercise on Concert F

Articulation exercise on Concert F, consisting of 20 numbered measures. Measures 1-5 are whole notes. Measures 6-10 are quarter notes, with measure 10 marked '* opt. ending on whole note'. Measures 11-14 are eighth notes, with measure 14 marked '* opt. ending on whole note'. Measures 15-18 are eighth-note triplets, with measure 18 marked '* opt. ending on whole note'. Measures 19-20 are sixteenth notes.

Long Tones Trombone

Concert F Descending

1

Exercise 1 consists of two staves of music in bass clef with a common time signature. The first staff contains measures 1 through 7, and the second staff contains measures 8 through 14. The notes are: 1 (F), 2 (E), 3 (D), 4 (C), 5 (B), 6 (A), 7 (G), 8 (F), 9 (E), 10 (D), 11 (C), 12 (B), 13 (A), 14 (G).

2

Exercise 2 consists of one staff of music in bass clef with a common time signature. It contains measures 1 through 4. The notes are: 1 (F), 2 (E), 3 (D), 4 (C).

Long Tone 1

1a

Exercise 1a consists of two staves of music in bass clef with a common time signature. The first staff contains measures 1 through 7, and the second staff contains measures 8 through 14. The notes are: 1 (F), 2 (E), 3 (D), 4 (C), 5 (B), 6 (A), 7 (G), 8 (F), 9 (E), 10 (D), 11 (C), 12 (B), 13 (A), 14 (G).

1b

Exercise 1b consists of two staves of music in bass clef with a common time signature. The first staff contains measures 1 through 7, and the second staff contains measures 8 through 14. The notes are: 1 (F), 2 (E), 3 (D), 4 (C), 5 (B), 6 (A), 7 (G), 8 (F), 9 (E), 10 (D), 11 (C), 12 (B), 13 (A), 14 (G).

1c

Exercise 1c consists of two staves of music in bass clef with a common time signature. The first staff contains measures 1 through 5, and the second staff contains measures 6 through 10. The notes are: 1 (F), 2 (E), 3 (D), 4 (C), 5 (B), 6 (A), 7 (G), 8 (F), 9 (E), 10 (D).

1d

Exercise 1d consists of two staves of music in bass clef with a common time signature. The first staff contains measures 1 through 6, and the second staff contains measures 7 through 12. The notes are: 1 (F), 2 (E), 3 (D), 4 (C), 5 (B), 6 (A), 7 (G), 8 (F), 9 (E), 10 (D), 11 (C), 12 (B).

Warm-Up Set 1

Options 1, 2, & 3

Options 1, 2, & 3

This section contains three staves of musical notation in bass clef, 6/8 time. The first staff (measures 1-5) has a key signature of one flat (Bb) and a common time signature (C). The second staff (measures 6-10) has a key signature of two flats (Bb, Eb) and a common time signature (C). The third staff (measures 11-14) has a key signature of one flat (Bb) and a common time signature (C). The notes are: 1: Bb, 2: Bb, 3: Bb, 4: Bb, 5: Bb, 6: Bb, 7: Bb, 8: Bb, 9: Bb, 10: Bb, 11: Bb, 12: Bb, 13: Bb, 14: Bb.

Option 4

Option 4

This section contains three staves of musical notation in bass clef, 6/8 time. The first staff (measures 1-5) has a key signature of one flat (Bb) and a common time signature (C). The second staff (measures 6-10) has a key signature of two flats (Bb, Eb) and a common time signature (C). The third staff (measures 11-14) has a key signature of one flat (Bb) and a common time signature (C). The notes are: 1: Bb, 2: Bb, 3: Bb, 4: Bb, 5: Bb, 6: Bb, 7: Bb, 8: Bb, 9: Bb, 10: Bb, 11: Bb, 12: Bb, 13: Bb, 14: Bb.

Option 5

Option 5

This section contains three staves of musical notation in bass clef, 6/8 time. The first staff (measures 1-5) has a key signature of one flat (Bb) and a common time signature (C). The second staff (measures 6-10) has a key signature of two flats (Bb, Eb) and a common time signature (C). The third staff (measures 11-14) has a key signature of one flat (Bb) and a common time signature (C). The notes are: 1: Bb, 2: Bb, 3: Bb, 4: Bb, 5: Bb, 6: Bb, 7: Bb, 8: Bb, 9: Bb, 10: Bb, 11: Bb, 12: Bb, 13: Bb, 14: Bb.

Warm-Up Set 2

Options 1, 2, & 3

Musical notation for Options 1, 2, & 3, consisting of three staves of music in bass clef with a common time signature. The first staff contains measures 1 through 5, the second staff contains measures 6 through 10, and the third staff contains measures 11 through 14. The music features a sequence of eighth and quarter notes, with various accidentals (flats and naturals) and slurs connecting the notes across measures.

Option 4

Musical notation for Option 4, consisting of three staves of music in bass clef with a common time signature. The first staff contains measures 1 through 5, the second staff contains measures 6 through 10, and the third staff contains measures 11 through 14. The music features a sequence of eighth and quarter notes, with various accidentals (flats, naturals, and sharps) and slurs connecting the notes across measures.

Option 5

Musical notation for Option 5, consisting of three staves of music in bass clef with a common time signature. The first staff contains measures 1 through 5, the second staff contains measures 6 through 10, and the third staff contains measures 11 through 14. The music features a sequence of eighth and quarter notes, with various accidentals (flats, naturals, and sharps) and slurs connecting the notes across measures.

Warm-Up Set 3

Options 1, 2, & 3

Options 1, 2, & 3 are presented as three lines of musical notation in bass clef with a key signature of one flat (Bb) and a common time signature (C). Each line contains four measures, with measures numbered 1 through 14. The notation features eighth and sixteenth notes, often beamed together, and includes slurs and breath marks. The first line covers measures 1-5, the second line covers measures 6-10, and the third line covers measures 11-14.

Option 4

Option 4 is presented as three lines of musical notation in bass clef with a key signature of one flat (Bb) and a common time signature (C). Each line contains four measures, with measures numbered 1 through 14. The notation features eighth and sixteenth notes, often beamed together, and includes slurs and breath marks. The first line covers measures 1-5, the second line covers measures 6-10, and the third line covers measures 11-14.

Option 5

Option 5 is presented as three lines of musical notation in bass clef with a key signature of one flat (Bb) and a common time signature (C). Each line contains four measures, with measures numbered 1 through 14. The notation features eighth and sixteenth notes, often beamed together, and includes slurs and breath marks. The first line covers measures 1-5, the second line covers measures 6-10, and the third line covers measures 11-14.

Warm-Up Set 4

Options 1, 2, & 3 - fingerings indicated in parenthesis

1 (2-4 or 1-2-3) 2 (4 or 1-3) 3 4 5 (2-3)

6 7 (1-2) 8 9 (1) 10

11 (2) 12 13 (Open) 14

Option 4 - fingerings indicated in parenthesis

1 (2-4 or 1-2-3) 2 (4 or 1-3) 3 4 5 (2-3)

6 7 (1-2) 8 9 (1) 10

11 (2) 12 13 (Open) 14

Option 5 - fingerings indicated in parenthesis

1 (2-4 or 1-2-3) 2 (4 or 1-3) 3 4

5 (2-3) 6 (1-2) 7 8

9 (1) 10 (2) 11 12

13

Technical Exercises in the Key of B \flat

Major Scale

Natural Minor

Harmonic Minor

Melodic Minor

Mini-Scale & Tonic Arpeggio

Scale Pattern *articulations:

Scale Pattern 2*

Musical notation for Scale Pattern 2* in bass clef, 6/8 time. The piece consists of two staves. The upper staff contains a melodic line with eighth notes, and the lower staff contains a bass line with eighth notes. The key signature has one flat (Bb).

Scale in Thirds*

Musical notation for Scale in Thirds* in bass clef, 6/8 time. The piece consists of two staves. The upper staff contains a melodic line with eighth notes, and the lower staff contains a bass line with eighth notes. The key signature has one flat (Bb).

Interval Study

Musical notation for Interval Study in bass clef, 6/8 time. The piece consists of a single staff with eighth notes. The key signature has one flat (Bb).

Triads of the Bb Scale

Musical notation for Triads of the Bb Scale in bass clef, 6/8 time. The piece consists of a single staff with eighth notes. The key signature has one flat (Bb). The triads are labeled I, ii, iii, IV, V, vi, and vii^o.

Chord Study 1*

Musical notation for Chord Study 1* in bass clef, 6/8 time. The piece consists of two staves. The upper staff contains a melodic line with eighth notes, and the lower staff contains a bass line with eighth notes. The key signature has one flat (Bb).

Chord Study 2 - articulations:

Musical notation for Chord Study 2 - articulations in bass clef, 6/8 time. The piece consists of two staves. The upper staff contains a melodic line with eighth notes, and the lower staff contains a bass line with eighth notes. The key signature has one flat (Bb). The piece is divided into five measures, each with a circled articulation mark above the notes.

Technical Exercises in the Key of E \flat

Major Scale

Natural Minor

Harmonic Minor

Melodic Minor

Mini-Scale & Tonic Arpeggio

Scale Pattern 1 *articulations:

Scale Pattern 2*

Two staves of music in E-flat major, 4/4 time. The upper staff features a sequence of eighth-note patterns: a descending eighth-note scale, an ascending eighth-note scale, a descending eighth-note scale, and an ascending eighth-note scale. The lower staff provides a steady accompaniment of eighth notes, alternating between the two hands.

Scale in Thirds*

Two staves of music in E-flat major, 4/4 time. The upper staff plays a scale in thirds, alternating between ascending and descending directions. The lower staff provides a steady accompaniment of eighth notes, alternating between the two hands.

Interval Study

A single staff of music in E-flat major, 4/4 time, featuring a sequence of eighth-note intervals: a descending eighth-note scale, an ascending eighth-note scale, a descending eighth-note scale, and an ascending eighth-note scale.

Triads of the E_b Scale

A single staff of music in E-flat major, 4/4 time, showing the seven triads of the scale: I, II, III, IV, V, VI, and VII^o. Each triad is played in a descending eighth-note pattern.

Chord Study 1*

Two staves of music in E-flat major, 4/4 time. The upper staff features six measures of eighth-note patterns, numbered 1 through 6, each starting with a different chord. The lower staff provides a steady accompaniment of eighth notes, alternating between the two hands.

Chord Study 2 - articulations:

Two staves of music in E-flat major, 4/4 time. The upper staff features six measures of eighth-note patterns, numbered 1 through 6, each starting with a different chord. The lower staff provides a steady accompaniment of eighth notes, alternating between the two hands.

Technical Exercises in the Key of A \flat

Major Scale

Two staves of music in bass clef, 4/4 time, key of A-flat major. The first staff contains a melodic line starting with a whole rest, followed by quarter notes: A \flat , B \flat , C \flat , D \flat , E \flat , F \flat , G \flat , A \flat . The second staff contains a bass line starting with a whole rest, followed by quarter notes: A \flat , B \flat , C \flat , D \flat , E \flat , F \flat , G \flat , A \flat . The exercise is divided into four measures.

Natural Minor

Two staves of music in bass clef, 4/4 time, key of A-flat minor. The first staff contains a melodic line starting with a whole rest, followed by quarter notes: A \flat , B \flat , C \flat , D \flat , E \flat , F \flat , G \flat , A \flat . The second staff contains a bass line starting with a whole rest, followed by quarter notes: A \flat , B \flat , C \flat , D \flat , E \flat , F \flat , G \flat , A \flat . The exercise is divided into four measures.

Harmonic Minor

Two staves of music in bass clef, 4/4 time, key of A-flat minor. The first staff contains a melodic line starting with a whole rest, followed by quarter notes: A \flat , B \flat , C \flat , D \flat , E \flat , F \flat , G \flat , A \flat . The second staff contains a bass line starting with a whole rest, followed by quarter notes: A \flat , B \flat , C \flat , D \flat , E \flat , F \flat , G \flat , A \flat . The exercise is divided into four measures.

Melodic Minor

Two staves of music in bass clef, 4/4 time, key of A-flat minor. The first staff contains a melodic line starting with a whole rest, followed by quarter notes: A \flat , B \flat , C \flat , D \flat , E \flat , F \flat , G \flat , A \flat . The second staff contains a bass line starting with a whole rest, followed by quarter notes: A \flat , B \flat , C \flat , D \flat , E \flat , F \flat , G \flat , A \flat . The exercise is divided into four measures.

Mini-Scale & Tonic Arpeggio

Two staves of music in bass clef, 4/4 time, key of A-flat major. The first staff contains a melodic line starting with a whole rest, followed by quarter notes: A \flat , B \flat , C \flat , D \flat , E \flat , F \flat , G \flat , A \flat . The second staff contains a bass line starting with a whole rest, followed by quarter notes: A \flat , B \flat , C \flat , D \flat , E \flat , F \flat , G \flat , A \flat . The exercise is divided into four measures.

Scale Pattern 1 *articulations: 1 2 3 4 5 6 7 8

Two staves of music in bass clef, 4/4 time, key of A-flat major. The first staff contains a melodic line starting with a whole rest, followed by quarter notes: A \flat , B \flat , C \flat , D \flat , E \flat , F \flat , G \flat , A \flat . The second staff contains a bass line starting with a whole rest, followed by quarter notes: A \flat , B \flat , C \flat , D \flat , E \flat , F \flat , G \flat , A \flat . The exercise is divided into four measures.

Scale Pattern 2*

Two staves of music in bass clef, 2/4 time, key of A-flat major. The top staff contains a scale pattern of eighth notes, and the bottom staff contains a corresponding bass line.

Scale in Thirds*

Two staves of music in bass clef, 2/4 time, key of A-flat major. The top staff contains a scale in thirds, and the bottom staff contains a corresponding bass line.

Interval Study

Single staff of music in bass clef, 2/4 time, key of A-flat major. The notation shows a sequence of intervals between notes.

Triads of the A \flat Scale

Single staff of music in bass clef, 2/4 time, key of A-flat major. The notation shows seven triads labeled I through vii^o.

Chord Study 1*

Two staves of music in bass clef, 2/4 time, key of A-flat major. The notation shows a sequence of chords and their corresponding bass lines.

Chord Study 2 - articulations:

Two staves of music in bass clef, 2/4 time, key of A-flat major. The notation shows a sequence of chords and their corresponding bass lines, with articulation marks (accents) above the notes.

Technical Exercises in the Key of D \flat

Major Scale

Two staves of music in D \flat major, 4/4 time. The treble staff starts with a whole rest, followed by an ascending eighth-note scale: D \flat , E \flat , F \flat , G \flat , A \flat , B \flat , C, D. The bass staff starts with a whole rest, followed by a descending eighth-note scale: C, B \flat , A \flat , G \flat , F \flat , E \flat , D \flat , C.

Natural Minor

Two staves of music in D \flat major, 4/4 time. The treble staff starts with a whole rest, followed by an ascending eighth-note scale: D \flat , E \flat , F \flat , G \flat , A \flat , B \flat , C, D. The bass staff starts with a whole rest, followed by a descending eighth-note scale: C, B \flat , A \flat , G \flat , F \flat , E \flat , D \flat , C.

Harmonic Minor

Two staves of music in D \flat major, 4/4 time. The treble staff starts with a whole rest, followed by an ascending eighth-note scale: D \flat , E \flat , F \flat , G \flat , A \flat , B \flat , C \sharp , D. The bass staff starts with a whole rest, followed by a descending eighth-note scale: C, B \flat , A \flat , G \flat , F \flat , E \flat , D \flat , C.

Melodic Minor

Two staves of music in D \flat major, 4/4 time. The treble staff starts with a whole rest, followed by an ascending eighth-note scale: D \flat , E \flat , F \flat , G \flat , A \flat , B \flat , C \sharp , D. The bass staff starts with a whole rest, followed by a descending eighth-note scale: C, B \flat , A \flat , G \flat , F \flat , E \flat , D \flat , C.

Mini-Scale & Tonic Arpeggio

Two staves of music in D \flat major, 4/4 time. The treble staff features a series of eighth-note arpeggios starting on D \flat (D \flat , E \flat , F \flat , G \flat , A \flat , B \flat , C, D) with a slur over the first four notes. The bass staff features a series of eighth-note arpeggios starting on C (C, B \flat , A \flat , G \flat , F \flat , E \flat , D \flat , C) with a slur over the first four notes.

(also practice 8vb)

Scale Pattern 1 *articulations: 1 2 3 4 5 6 7 8

Two staves of music in D \flat major, 4/4 time. The treble staff contains eight eighth-note patterns, each with a different articulation (accents, slurs, etc.), starting on D \flat . The bass staff contains eight eighth-note patterns, each with a different articulation, starting on C.

(also practice 8vb)

Scale Pattern 2*

Two staves of music in bass clef, key of D-flat major (two flats), and common time. The top staff features a sequence of eighth-note triplets, while the bottom staff features a sequence of eighth-note pairs. The piece concludes with a final half-note chord.

(also practice 8vb)

Scale in Thirds*

Two staves of music in bass clef, key of D-flat major, and common time. The top staff plays a scale in thirds, and the bottom staff plays a scale in pairs. The piece concludes with a final half-note chord.

Interval Study

A single staff of music in bass clef, key of D-flat major, and common time. It features a sequence of eighth-note intervals, including thirds and pairs, across the scale.

Triads of the D \flat Scale

A single staff of music in bass clef, key of D-flat major, and common time. It displays seven triads labeled i through vii^o, each with a chord symbol above it. The triads are: i (D-flat major), ii (E-flat minor), iii (F minor), IV (G-flat major), V (A-flat major), vi (B-flat minor), and vii^o (D-flat diminished).

Chord Study 1*

Two staves of music in bass clef, key of D-flat major, and common time. The top staff features six chords labeled 1 through 6, each with a chord symbol above it. The bottom staff provides a rhythmic accompaniment for these chords.

Chord Study 2 - articulations:

Two staves of music in bass clef, key of D-flat major, and common time. The top staff features six chords labeled 1 through 6, each with a chord symbol above it. The bottom staff provides a rhythmic accompaniment for these chords, with articulation marks (accents) above the notes.

Technical Exercises in the Key of F

Major Scale

Natural Minor

Harmonic Minor

Melodic Minor

Mini-Scale & Tonic Arpeggio

Scale Pattern 1 *articulations:

Scale Pattern 2*

Two staves of music in bass clef, 2/4 time. The top staff contains a sequence of eighth notes: F4, G4, A4, Bb4, C5, Bb4, A4, G4, F4. This sequence is repeated four times across the staff. The bottom staff contains a sequence of eighth notes: F3, G3, A3, Bb3, C4, Bb3, A3, G3, F3. This sequence is also repeated four times across the staff.

Scale in Thirds*

Two staves of music in bass clef, 2/4 time. The top staff contains eighth notes in pairs: F4-G4, A4-Bb4, C5-Bb4, A4-G4, F4. This sequence is repeated four times. The bottom staff contains eighth notes in pairs: F3-G3, A3-Bb3, C4-Bb3, A3-G3, F3. This sequence is also repeated four times.

Interval Study

A single staff of music in bass clef, 2/4 time. It contains a sequence of eighth notes: F4, G4, A4, Bb4, C5, Bb4, A4, G4, F4. This sequence is repeated four times.

Triads of the F Scale

A single staff of music in bass clef, 2/4 time. It shows seven triads labeled I through vii^o. Each triad is played in a specific voicing: I (F4, A4, C5), ii (F4, Ab4, C5), iii (F4, Bb4, C5), IV (F4, A4, C5), V (F4, Ab4, C5), vi (F4, Bb4, C5), and vii^o (F4, Ab4, C5).

Chord Study 1*

Two staves of music in bass clef, 2/4 time. The top staff contains six measures of eighth notes: 1. F4, G4, A4, Bb4; 2. C5, Bb4, A4, G4; 3. F4, G4, A4, Bb4; 4. C5, Bb4, A4, G4; 5. F4, G4, A4, Bb4; 6. C5, Bb4, A4, G4. The bottom staff contains six measures of eighth notes: 1. F3, G3, A3, Bb3; 2. C4, Bb3, A3, G3; 3. F3, G3, A3, Bb3; 4. C4, Bb3, A3, G3; 5. F3, G3, A3, Bb3; 6. C4, Bb3, A3, G3.

Chord Study 2 - articulations:

Two staves of music in bass clef, 2/4 time. The top staff contains six measures of eighth notes with articulation marks (accents) above them: 1. F4, G4, A4, Bb4; 2. C5, Bb4, A4, G4; 3. F4, G4, A4, Bb4; 4. C5, Bb4, A4, G4; 5. F4, G4, A4, Bb4; 6. C5, Bb4, A4, G4. The bottom staff contains six measures of eighth notes: 1. F3, G3, A3, Bb3; 2. C4, Bb3, A3, G3; 3. F3, G3, A3, Bb3; 4. C4, Bb3, A3, G3; 5. F3, G3, A3, Bb3; 6. C4, Bb3, A3, G3.

Technical Exercises in the Key of G

Major Scale

Musical notation for the Major Scale exercise in G major, consisting of two staves with a treble and bass clef. The music is in 4/4 time and features a sequence of eighth notes in the bass clef and quarter notes in the treble clef, with a final whole note chord in the treble.

Natural Minor

Musical notation for the Natural Minor scale exercise in G minor, consisting of two staves with a treble and bass clef. The music is in 4/4 time and features a sequence of eighth notes in the bass clef and quarter notes in the treble clef, with a final whole note chord in the treble.

Harmonic Minor

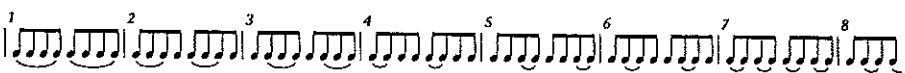
Musical notation for the Harmonic Minor scale exercise in G minor, consisting of two staves with a treble and bass clef. The music is in 4/4 time and features a sequence of eighth notes in the bass clef and quarter notes in the treble clef, with a final whole note chord in the treble.

Melodic Minor

Musical notation for the Melodic Minor scale exercise in G minor, consisting of two staves with a treble and bass clef. The music is in 4/4 time and features a sequence of eighth notes in the bass clef and quarter notes in the treble clef, with a final whole note chord in the treble.

Mini-Scale & Tonic Arpeggio

Musical notation for the Mini-Scale & Tonic Arpeggio exercise in G major, consisting of two staves with a treble and bass clef. The music is in 4/4 time and features a sequence of eighth notes in the bass clef and quarter notes in the treble clef, with a final whole note chord in the treble.

Scale Pattern 1 *articulations: 

Musical notation for the Scale Pattern 1 exercise in G major, consisting of two staves with a treble and bass clef. The music is in 4/4 time and features a sequence of eighth notes in the bass clef and quarter notes in the treble clef, with a final whole note chord in the treble.

*Scale Pattern 2**

Musical notation for Scale Pattern 2* in G major, common time. The piece consists of two staves. The upper staff features a melodic line with eighth-note runs, and the lower staff provides a steady eighth-note accompaniment.

*Scale in Thirds**

Musical notation for Scale in Thirds* in G major, common time. The upper staff plays a scale in thirds, while the lower staff plays a scale in single notes.

Interval Study

Musical notation for Interval Study in G major, common time. The piece consists of a single staff with eighth-note intervals.

Triads of the G Scale

Musical notation for Triads of the G Scale in G major, common time. The piece consists of a single staff showing seven triads labeled I through vii^o.

*Chord Study 1**

Musical notation for Chord Study 1* in G major, common time. The piece consists of two staves. The upper staff features six measures of eighth-note runs, each starting with a number 1-6. The lower staff provides a steady eighth-note accompaniment.

Chord Study 2 - articulations:

Musical notation for Chord Study 2 - articulations in G major, common time. The piece consists of two staves. The upper staff features six measures of eighth-note runs, each starting with a number 1-6. The lower staff provides a steady eighth-note accompaniment.

Chorale 2 (full band)

Musical score for Chorale 2 (full band) in bass clef, 2/4 time, key of B-flat major. The score consists of two staves. The first staff is marked *mf* and contains measures 1 through 4. The second staff contains measures 5 through 8, ending with a fermata and the instruction *ritard*.

Chorale Melody on Chester

Musical score for Chorale Melody on Chester in bass clef, 2/4 time, key of B-flat major. The score is arranged in three staves: Subdivision, Chorale Melody, and Bopped. The Subdivision staff features eighth-note patterns. The Chorale Melody staff is marked *mf* and contains the main melody. The Bopped staff features a rhythmic accompaniment of eighth notes. The score is divided into two systems, each with four measures. The fourth measure of each system is marked as a cadence.

Chester Chorale (full band)

Musical score for Chester Chorale (full band) in bass clef, 2/4 time, key of B-flat major. The score consists of four staves. The first staff is marked *mf* and contains measures 1 through 4. The second staff contains measures 5 through 8. The third staff is marked *mp* and contains measures 9 through 12. The fourth staff contains measures 13 through 16, with dynamic markings *mf* and *f* indicated. The score concludes with a fermata.

Chorale 4 (full band)

Musical score for Chorale 4 (full band) in bass clef, 4/4 time. The score consists of two staves. The first staff is labeled 'Euph' and contains measures 1 through 4. The second staff contains measures 5 through 8. The dynamic marking *mf* is placed below the first staff. Measure numbers 1 through 8 are indicated above the notes.

Chorale Melody on Bach 95

Musical score for Chorale Melody on Bach 95 in bass clef, 4/4 time. The score is arranged in three staves: Subdivision, Chorale Melody, and Bopped. The Subdivision staff contains eighth-note patterns. The Chorale Melody staff contains the main melody with a *mf* dynamic marking. The Bopped staff contains a bass line with eighth notes. The score is divided into two systems, each ending with a '(cadence)' marking. Measure numbers 1 through 8 are indicated above the notes.

Bach 95 (full band)

Musical score for Bach 95 (full band) in bass clef, 4/4 time. The score consists of three staves, all labeled 'Euph'. The first staff contains measures 1 through 4, the second staff contains measures 5 through 8, and the third staff contains measures 9 through 12. The dynamic marking *mf* is placed below the first staff. Measure numbers 1 through 12 are indicated above the notes.

Chorale 6 (full band)

Musical notation for Euphonium (Euph) part of Chorale 6 (full band). The score is in bass clef, 3/4 time, and B-flat major. It consists of two staves. The first staff contains measures 1 through 4, and the second staff contains measures 5 through 8. The dynamic marking *mf* is present below the first staff. Measure numbers 1, 2, 3, 4, 5, 6, 7, and 8 are indicated above the notes.

Chorale Melody on America

Musical notation for Chorale Melody on America. The score is in bass clef, 3/4 time, and B-flat major. It consists of three staves: Subdivision, Chorale Melody, and Bopped. The dynamic marking *mf* is present below the middle staff. The Subdivision staff contains measures 1 through 3. The Chorale Melody staff contains measures 1 through 3. The Bopped staff contains measures 1 through 3. The score continues with measures 4 through 8 (cadence) on a second system. Measure numbers 1, 2, 3, 4, 5, 6, 7, and 8 (cadence) are indicated above the notes.

America (full band)

Musical notation for Euphonium (Euph) part of America (full band). The score is in bass clef, 3/4 time, and B-flat major. It consists of three staves. The first staff contains measures 1 through 5, and the second staff contains measures 6 through 10. The third staff contains measures 11 through 14. The dynamic marking *mf* is present below the first staff. Measure numbers 1, 2, 3, 4, 5, 6, 7, 8, 9, 10, 11, 12, 13, and 14 are indicated above the notes.

Chorale & Tuning Exercises in A \flat

Interval Tuning

1 Intervals from tonic (major 3rd, perfect 4th, perfect 5th)

Chord Tuning

All Through the Night (full band)

*Scale Pattern 2**

Two staves of music in E-flat major, 4/4 time. The upper staff contains a scale pattern of eighth notes, and the lower staff contains a corresponding bass line of eighth notes.

*Scale in Thirds**

Two staves of music in E-flat major, 4/4 time. The upper staff contains a scale pattern of eighth notes, and the lower staff contains a corresponding bass line of eighth notes.

Interval Study

A single staff of music in E-flat major, 4/4 time, showing a sequence of intervals between notes.

Triads of the E \flat Scale

A single staff of music in E-flat major, 4/4 time, showing seven triads labeled I through vii^o.

*Chord Study 1**

Two staves of music in E-flat major, 4/4 time. The upper staff contains a sequence of six chords, and the lower staff contains a corresponding bass line.

Chord Study 2 - articulations:

Two staves of music in E-flat major, 4/4 time. The upper staff contains a sequence of six chords with articulations, and the lower staff contains a corresponding bass line.

SOLO

13

14

15

16

SOLO

17

18

19

20

SOLO

21

22

23

24