

Cornet/Baritone 

\$7.95

# 204 PROGRESSIVE



**SIGHT**



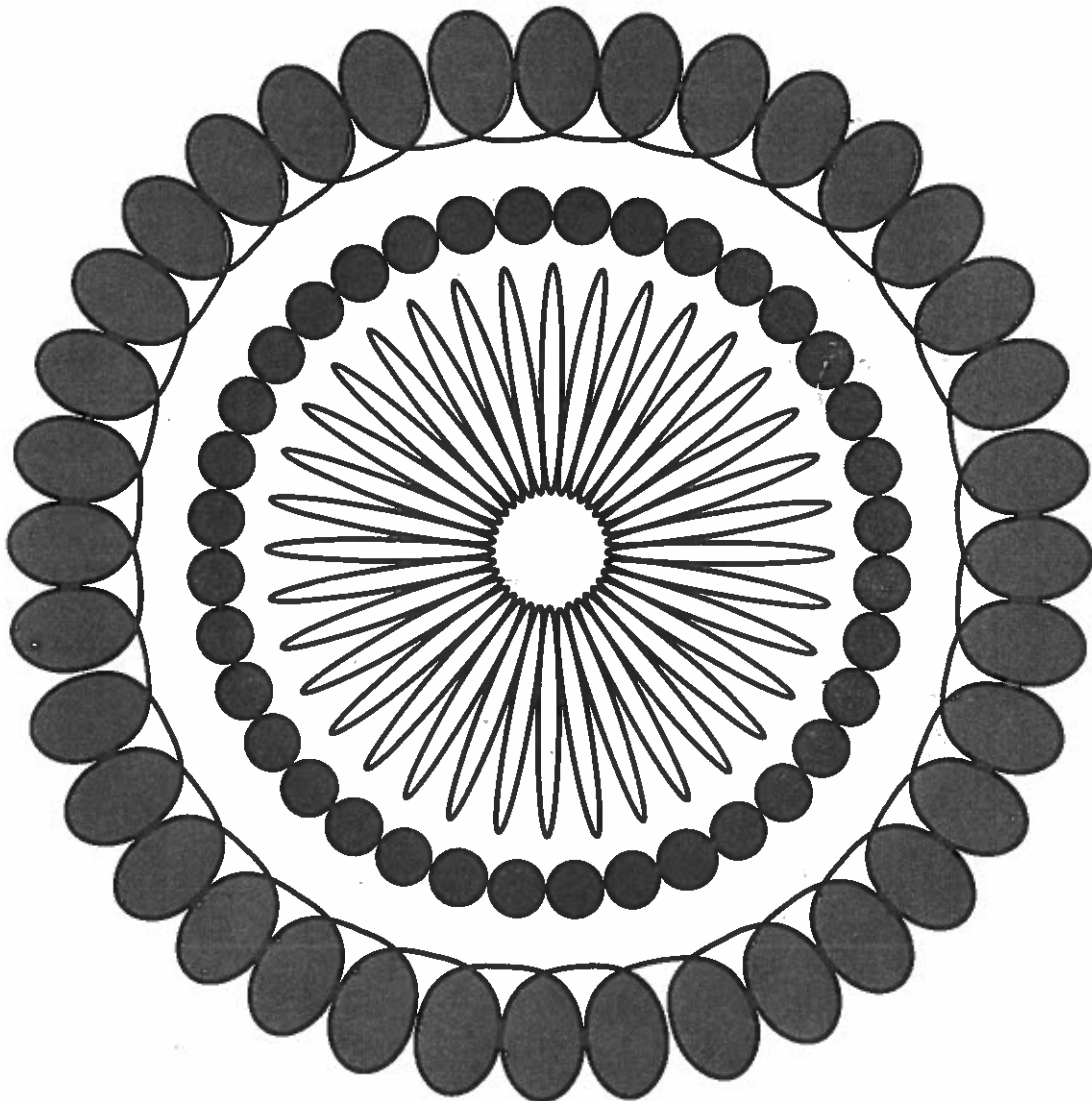
**READING**



**TUNES**

by

Roger Winslow



\$ 7.95

Bb CORNET  
BARITONE T.C.



**204 PROGRESSIVE SIGHT READING TUNES**

**BY**

**ROGER WINSLOW**

**Copyright 1997, Gore Publishing Co., 314 S. Elm St., Denton, Texas**

## **ROGER WINSLOW**

Roger grew up in Gunnison, Colorado where he earned both Bachelor and Master's Degrees at Western State College. He was also privileged to attend the Western State College Summer Band Camps and studied band method arranging and composition with William Revelli, A.A. Harding, Mark Hindsley, Harold Walters, and Randall Spicer.

Roger has directed bands at Wallace, Idaho; Brownsboro, Texas; DeKalb, Texas; and L.D. Bell High School in Hurst, Texas. After retirement in 1984, he taught private low brass lessons at Smithfield Middle School and Richland High School. Many of his students attained All Region and All State memberships.

Mr. Winslow's bands received numerous Division 1 ratings, ranked in the top five Honor Band competition three times, and winning 5A Honor Band in 1970. His L.D. Bell Band was one of the first bands in the nation to receive the Sudler Flag of Honor and to be inducted into the J.P. Sousa High School Band Hall of Fame.

In 1993 Roger was selected as a charter member of the Region 5 Band Masters' Hall of Fame, and in 1995, was inducted as a member of the Texas State Bandmasters' Hall of Fame.

Roger and his wife, Lee, currently reside near Mineola, Texas.

# 204 Progressive Sight Reading Tunes

Bb Cornet  
Baritone T.C.

Roger Winslow

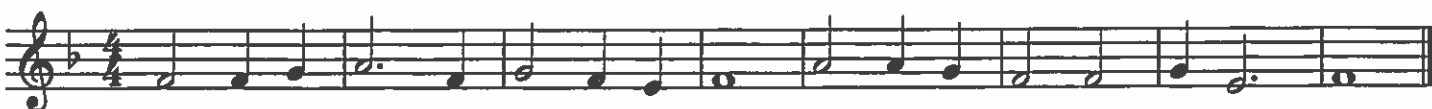
Tune No. 1



Tune No. 2



Tune No. 3



Tune No. 4



Tune No. 5



Tune No. 6



Tune No. 7



Tune No. 8



**Bb Cornet  
Baritone T.C.**

**Tune No. 9**



**Tune No. 10**



**Tune No. 11**



**Tune No. 12**



**Tune No. 13**



**Tune No. 14**



**Tune No. 15**



**Tune No. 16**



**Bb Cornet  
Baritone T.C.**

**Tune No. 17**



**Tune No. 18**



**Tune No. 19**



**Tune No. 20**



**Tune No. 21**



**Tune No. 22**



**Tune No. 23**



**Tune No. 24**

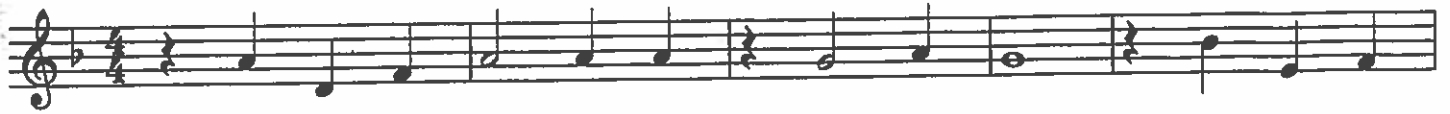


**Bb Cornet  
Baritone T.C.**

**Tune No. 25**



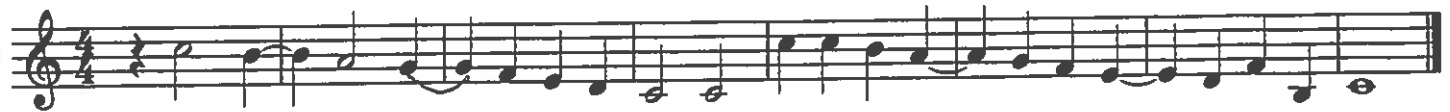
**Tune No. 26**



**Tune No. 27**



**Tune No. 28**



**Tune No. 29**



**Tune No. 30**



**Bb Cornet  
Baritone T.C.**

**Tune No. 31**



**Tune No. 32**



**Tune No. 33**



**Tune No. 34**



**Tune No. 35**



**Tune No. 36**



**Tune No. 37**



**Tune No. 38**





**Bb Cornet  
Baritone T.C.**

**Tune No. 39**



**Tune No. 40**



**Tune No. 41**



**Tune No. 42**



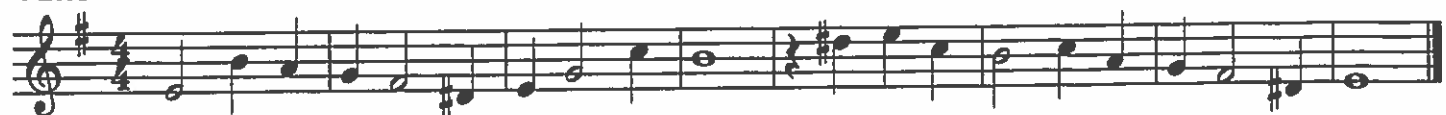
**Tune No. 43**



**Tune No. 44**



**Tune No. 45**



**Tune No. 46**



Bb Cornet  
Baritone T.C.

Tune No. 47

Musical notation for Tune No. 47, consisting of two staves of music in 3/4 time with a key signature of one sharp (F#).

Tune No. 48

Musical notation for Tune No. 48, consisting of three staves of music in common time with a key signature of one sharp (F#).

Tune No. 49

Musical notation for Tune No. 49, consisting of two staves of music in common time with a key signature of two flats (Bb, Eb).

Tune No. 50

Musical notation for Tune No. 50, consisting of one staff of music in common time with a key signature of one sharp (F#). A circled cross symbol is placed above the staff.

Coda

Musical notation for the Coda section, consisting of one staff of music in common time with a key signature of one sharp (F#).

D.C. al  $\oplus$  Coda

Bb Cornet  
Baritone T.C.

✓ *page 27*

Tune No. 51

Musical notation for Tune No. 51, consisting of three staves of music in 2/4 time. The first staff begins with a treble clef, a key signature of one flat (Bb), and a common time signature (C). The melody consists of eighth and quarter notes with various accidentals.

Tune No. 52

Musical notation for Tune No. 52, consisting of three staves of music in 2/4 time. The first staff begins with a treble clef, a key signature of one flat (Bb), and a common time signature (C). The melody consists of eighth and quarter notes.

Tune No. 53

Musical notation for Tune No. 53, consisting of three staves of music in 3/4 time. The first staff begins with a treble clef, a key signature of one flat (Bb), and a 3/4 time signature. The melody starts with a *mf* dynamic marking. The notation includes eighth notes, quarter notes, and half notes with various accidentals.

Edw 8

# Bb Cornet Baritone T.C.

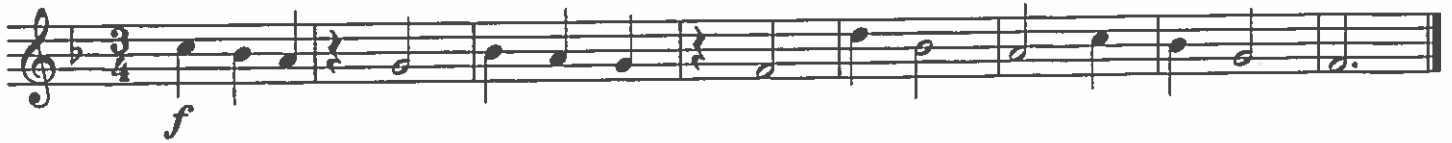
Tune No. 54



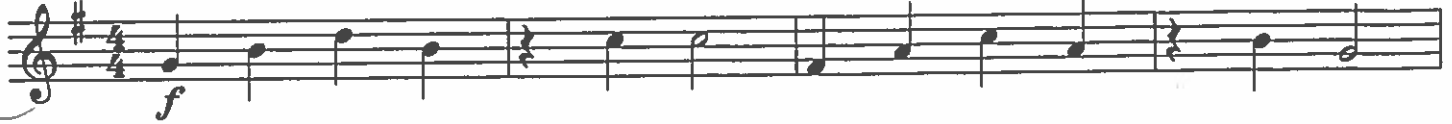
Tune No. 55



Tune No. 56



Tune No. 57



Tune No. 58



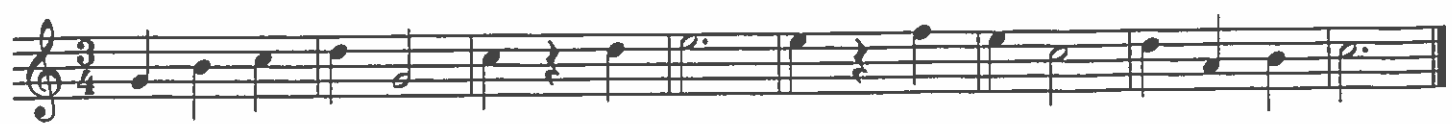
Tune No. 59



Tune No. 60



Tune No. 61



Bb Cornet  
Baritone T.C.

Tune No. 62



Tune No. 63

*Fed p*



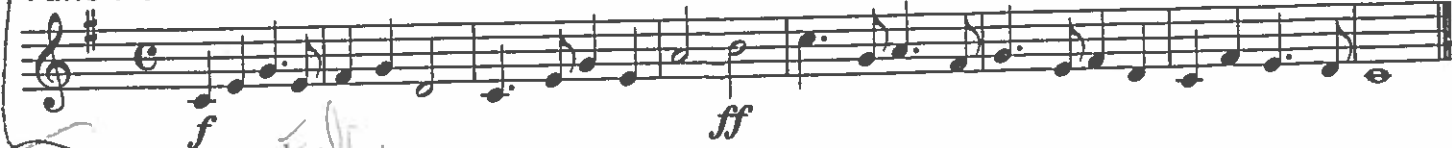
Tune No. 64



Tune No. 65



Tune No. 66



Tune No. 67

*Fed 15*



Tune No. 68



Bb Cornet  
Baritone T.C.

Tune No. 69



Tune No. 70

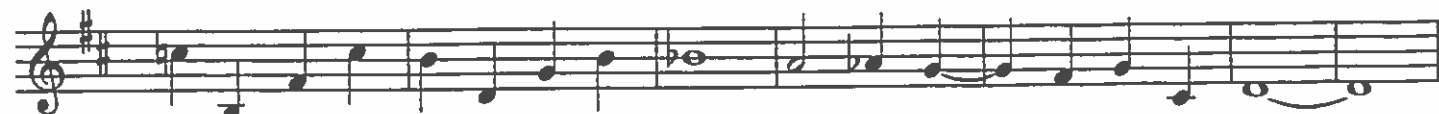


Tune No. 71



Tune No. 72

Legato



Bb Cornet  
Baritone T.C.

Tune No. 73

Dolce

Musical notation for Tune No. 73, marked *Dolce* and *mp*. The piece is in 3/4 time and consists of three staves of music. The first staff begins with a treble clef, a key signature of one flat (Bb), and a 3/4 time signature. The melody is characterized by smooth, flowing lines with many slurs and ties, typical of a dolce (sweet) style.

Tune No. 74

Expressively

Musical notation for Tune No. 74, marked *Expressively* and *mf*. The piece is in 3/4 time and consists of two staves. The first staff begins with a treble clef, a key signature of two sharps (F# and C#), and a 3/4 time signature. The melody is more rhythmic and expressive than the previous tune. A circled cross symbol (⊕) is placed above the staff at the end of the first line. The second staff concludes with a double bar line and the word "Coda" written above it. Below the second staff, the instruction "D.C. al ⊕ Coda" is written.

Tune No. 75

Ballad

Musical notation for Tune No. 75, marked *Ballad* and *mf*. The piece is in 4/4 time and consists of two staves. The first staff begins with a treble clef, a key signature of one flat (Bb), and a 4/4 time signature. The melody is slow and lyrical, with long slurs and ties, characteristic of a ballad.

Tune No. 76

Waltz

Musical notation for Tune No. 76, marked *Waltz*. The piece is in 3/4 time and consists of two staves. The first staff begins with a treble clef, a key signature of one flat (Bb), and a 3/4 time signature. The melody is light and rhythmic, typical of a waltz.

Bb Cornet  
Baritone T.C.

Tune No. 77  
Spritly

Tune No. 78  
Sweetly

Tune No. 79  
In One

Tune No. 80  
Slowly

Tune No. 81  
Liltingly



Bb Cornet  
Baritone T.C.

Tune No. 82

Broadly

Musical notation for Tune No. 82, Broadly. The piece is in 4/4 time and begins with a dynamic marking of *f*. The melody is written on a single staff.

Tune No. 83

Slow Valse

Musical notation for Tune No. 83, Slow Valse. The piece is in 3/4 time and begins with a dynamic marking of *mf*. The melody is written on a single staff.

Tune No. 84

Lightly In 2

Musical notation for Tune No. 84, Lightly In 2. The piece is in 6/8 time and features a repeat sign. The melody is written on a single staff.

Tune No. 85

Moderato

Musical notation for Tune No. 85, Moderato. The piece is in 2/4 time and features three staves of music. The melody is written on a single staff.

Tune No. 86

Andante

Musical notation for Tune No. 86, Andante. The piece is in 3/4 time and begins with a dynamic marking of *mf*. The melody is written on a single staff.

Bb Cornet  
Baritone T.C.

Tune No. 87

Marcia

*f*

Tune No. 88

Andante

*mp* Rit.

Tune No. 89

Lively

*f*

Tune No. 90

Moderato

*mf*

Tune No. 91

Tenderly

*p* Rit.

Bb Cornet  
Baritone T.C.

Tune No. 92  
March

Musical notation for Tune No. 92, March. Two staves of music in 4/4 time. The first staff begins with a forte (*f*) dynamic. The melody consists of eighth and quarter notes.

Tune No. 93

Musical notation for Tune No. 93. Three staves of music in 3/4 time. The first staff begins with a mezzo-forte (*mf*) dynamic. The melody features eighth notes and quarter notes with accents.

Tune No. 94  
Minuet

Musical notation for Tune No. 94, Minuet. Two staves of music in 3/4 time. The first staff begins with a mezzo-piano (*mp*) dynamic. The melody consists of quarter and eighth notes with slurs.

Tune No. 95  
In 2

Musical notation for Tune No. 95, In 2. One staff of music in 2/8 time. The first staff begins with a mezzo-forte (*mf*) dynamic. The melody consists of eighth and quarter notes.

Tune No. 96  
In 2

Musical notation for Tune No. 96, In 2. Two staves of music in 2/8 time. The first staff begins with a forte (*f*) dynamic. The melody consists of eighth and quarter notes.

**Bb Cornet  
Baritone T.C.**

**Tune No. 97  
In 2**

Musical notation for Tune No. 97, In 2, *mf*. The piece is in 2/4 time and consists of a single staff of music.

**Tune No. 98  
In 2**

Musical notation for Tune No. 98, In 2, *mf*. The piece is in 2/4 time and consists of two staves of music.

**Tune No. 99  
Allegretto**

Musical notation for Tune No. 99, Allegretto, *mf*. The piece is in 2/4 time and consists of two staves of music.

**Tune No. 100  
Moderato In 2**

Musical notation for Tune No. 100, Moderato In 2, *mf*. The piece is in 2/4 time and consists of two staves of music.

**Tune No. 101  
Andante**

Musical notation for Tune No. 101, Andante, *p*. The piece is in 3/4 time and consists of a single staff of music.

**Tune No. 102  
Slowly and Expressively**

Musical notation for Tune No. 102, Slowly and Expressively, *p*. The piece is in 3/4 time and consists of two staves of music. The second staff ends with a *Rit.* marking.

Bb Cornet  
Baritone T.C.

Tune No. 103  
Moderato



Tune No. 104  
Sprightly



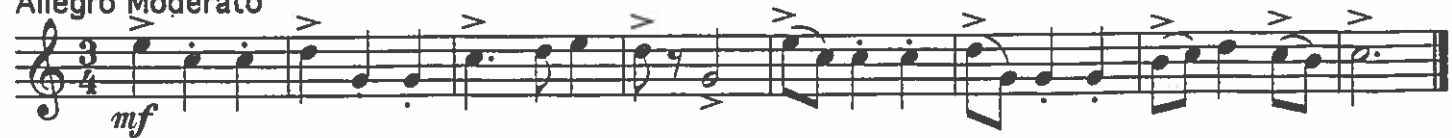
Tune No. 105  
Andante Moderato



Tune No. 106  
Marcia



Tune No. 107  
Allegro Moderato



Tune No. 108  
Sadly



Bb Cornet  
Baritone T.C.

Tune No. 109  
March Tempo

Musical notation for Tune No. 109, March Tempo. The piece is in 6/8 time and B-flat major. It consists of two staves of music. The first staff begins with a dynamic marking of *f* (forte).

Tune No. 110  
Moderato

Musical notation for Tune No. 110, Moderato. The piece is in 6/8 time and D major. It consists of one staff of music with a dynamic marking of *mf* (mezzo-forte).

Tune No. 111  
Moderately Fast

Musical notation for Tune No. 111, Moderately Fast. The piece is in 6/8 time and B-flat major. It consists of three staves of music, with a dynamic marking of *mf* (mezzo-forte) at the beginning.

Tune No. 112  
Moderato

Musical notation for Tune No. 112, Moderato. The piece is in 6/8 time and D major. It consists of two staves of music, with a dynamic marking of *mf* (mezzo-forte) at the beginning.

Tune No. 113  
Marcia

Musical notation for Tune No. 113, Marcia. The piece is in 2/4 time and B-flat major. It consists of two staves of music, with a dynamic marking of *f* (forte) at the beginning.

Bb Cornet  
Baritone T.C.

Tune No. 114

Allegretto

*mf*

Tune No. 115

Allegro Moderato

*mp*

Tune No. 116

Moderato (in 2)

*mf*

Tune No. 117

Spirited

*f*

Tune No. 118

Allegretto

*mf*

Bb Cornet  
Baritone T.C.

Tune No. 119

Moderato

D.C. al Coda

Coda

Tune No. 120

Slow March

Tune No. 121

Allegretto

Tune No. 122

Andante



Bb Cornet  
Baritone T.C.

Tune No. 123

With Vigor

Musical notation for Tune No. 123, featuring two staves of music in G major and 2/4 time. The first staff begins with a dynamic marking of *f* (forte).

Tune No. 124

Tempo Di Valse

Musical notation for Tune No. 124, featuring two staves of music in G major and 3/4 time. The first staff begins with a dynamic marking of *mp* (mezzo-piano).

Tune No. 125

Moderato

Musical notation for Tune No. 125, featuring two staves of music in Bb major and 4/4 time. The first staff begins with a dynamic marking of *mf* (mezzo-forte).

Tune No. 126

Dolce

Musical notation for Tune No. 126, featuring three staves of music in G major and 4/4 time. The first staff begins with a dynamic marking of *mp* (mezzo-piano). The second staff concludes with the instruction *Rit.* (ritardando).

a tempo

Musical notation for the continuation of Tune No. 126, featuring one staff of music in G major and 4/4 time. The staff begins with the instruction *a tempo* and concludes with *Rit.* (ritardando).

**Bb Cornet  
Baritone T.C.**

**Tune No. 127  
Joyously**

**Tune No. 128  
Marcia**

**Tune No. 129  
Tempo Di Valse**

Bb Cornet  
Baritone T.C.

Tune No. 130  
Slowly and Legato

Musical notation for Tune No. 130, Slowly and Legato. The piece is in 4/4 time with a key signature of one sharp (F#). It consists of three staves of music. The first staff begins with a dynamic marking of *mp*. The melody is characterized by smooth, flowing lines with long note values and slurs.

Tune No. 131  
Lively

Musical notation for Tune No. 131, Lively. The piece is in 4/4 time with a key signature of two flats (Bb). It consists of three staves of music. The first staff begins with a dynamic marking of *mf*. The melody is more rhythmic and energetic, featuring eighth and sixteenth notes with slurs and accents.

Tune No. 132  
Marcia

Musical notation for Tune No. 132, Marcia. The piece is in 3/4 time with a key signature of one flat (Bb). It consists of three staves of music. The first staff begins with a dynamic marking of *f*. The melody is march-like, featuring prominent triplets and a strong rhythmic pattern.

**Bb Cornet  
Baritone T.C.**

**Tune No. 133**

Andante

*mf*

**Tune No. 134**

Marcia

*f*

Coda

D.S.al coda

**Tune No. 135**

Slowly and Expressively

*mf*

Ritard.

**Tune No. 136**

Moderato

*mf*

**Bb Cornet  
Baritone T.C.**

**Tune No. 137**  
Slow and Expressively

**Tune No. 138**  
Allegro (In 6)

**Tune No. 139**  
Moderato

**Tune No. 140**  
Smoothly (One to the Bar)

**Bb Cornet  
Baritone T.C.**

**Tune No. 141**

*Dolce*

*mp* *a tempo* *Rit.* *Rit.*

**Tune No. 142**

*Allegro*

*mf*

**Tune No. 143**

*Allegro Moderato*

*mf*

**Tune No. 144**

*Alla Marcia*

*f*

**Bb Cornet  
Baritone T.C.**

**Tune No. 145**

Lightly

Musical score for Tune No. 145, marked *mp* (mezzo-piano). The score consists of three staves of music in 2/4 time. The key signature changes from one flat (Bb) to three sharps (F#, C#, G#) in the second measure of the first staff. The melody is primarily eighth and sixteenth notes.

**Tune No. 146**

Moderato

Musical score for Tune No. 146, marked *mf* (mezzo-forte). The score consists of three staves of music in 2/4 time. The key signature is three sharps (F#, C#, G#). The melody features a mix of eighth and sixteenth notes with some slurs.

**Tune No. 147**

Moderato

Musical score for Tune No. 147, marked *mf* (mezzo-forte). The score consists of four staves of music in 3/4 time. The key signature is one sharp (F#). The melody is composed of eighth and sixteenth notes with various phrasing slurs.

**Bb Cornet  
Baritone T.C.**

**Tune No. 148**

Moderato

**Tune No. 149**

Andante Expressivo

**Tune No. 150**

Slowly

**Tune No. 151**

Moderately Slow



**Bb Cornet  
Baritone T.C.**

**Tune No. 152  
Tempo Di Bolero**

Musical score for Tune No. 152, Tempo Di Bolero. The score is written for Bb Cornet and Baritone T.C. It consists of five staves of music in 3/4 time. The key signature has one flat (Bb). The music features a melodic line with various ornaments, including accents and slurs. The dynamic marking *mf* is present at the beginning.

**Tune No. 153  
Andante e Dolce**

Musical score for Tune No. 153, Andante e Dolce. The score is written for Bb Cornet and Baritone T.C. It consists of three staves of music in 3/4 time. The key signature has one sharp (F#). The music features a melodic line with a dynamic marking of *mp*.

**Tune No. 154  
Moderately (2 to the Bar)**

Musical score for Tune No. 154, Moderately (2 to the Bar). The score is written for Bb Cornet and Baritone T.C. It consists of three staves of music in 6/8 time. The key signature has one sharp (F#). The music features a melodic line with a dynamic marking of *mf* and double bar lines.

**Bb Cornet  
Baritone T.C.**

**Tune No. 155  
Andante e Legato**

*mf*

**Tune No. 156  
Cossack Dance**

*f*

**Tune No. 157  
Rubato**

*mp*

**Tune No. 158  
Poignantly**

*mp*

Bb Cornet  
Baritone T.C.

Tune No. 159

Lively

*mf* Coda  
D.C. al Coda

Tune No. 160

Indian Dance

*mf*

Tune No. 161

Allegro

*mf*

Tune No. 162

2 to the Bar

*f*

Tune No. 163

Clog Dance

*mf*

Tune No. 164

Ragtime

*mf*

**Bb Cornet  
Baritone T.C.**

**Tune No. 165  
Andante e Dolce**

**Tune No. 166  
Sadly**

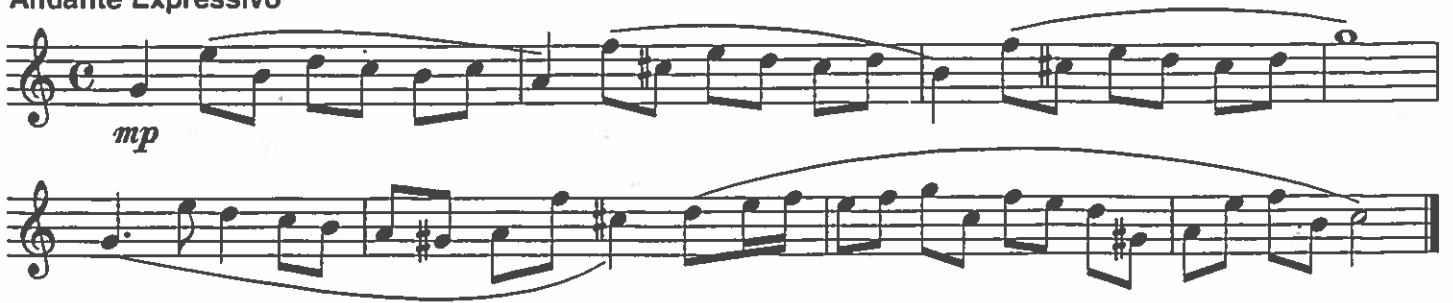
**Tune No. 167  
Allegretto**

**Tune No. 168  
Tempo Di Valse**


**Tune No. 169  
Allegro Spiritoso**

**Bb Cornet  
Baritone T.C.**

**Tune No. 170  
Andante Expressivo**



**Tune No. 171  
Gaily but not Fast**



**Tune No. 172  
Lively**



**Tune No. 173  
With Spirit**



**Bb Cornet  
Baritone T.C.**

**Tune No. 174  
Moderately Slow**

*Dolce*  
*mp*

**Tune No. 175  
Boldly**

*f*

**Tune No. 176  
Flowingly**

*mp*

**Tune No. 177  
Lively**

*mf*

**Coda**

**Bb Cornet  
Baritone T.C.**

**Tune No. 178**

**Moderato**



**Tune No. 179**

**Allegretto**



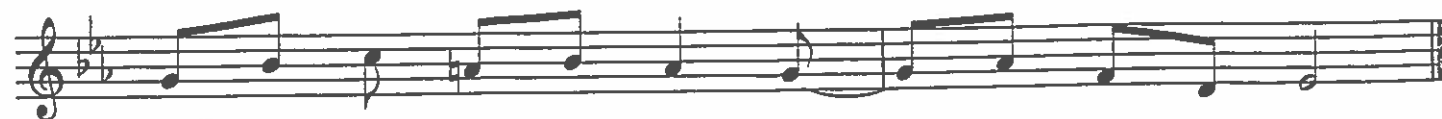
**Tune No. 180**

**In 2 With Spirit**



**Tune No. 181**

**Allegretto**



Bb Cornet  
Baritone T.C.

Tune No. 182

Andante

*mf*

1

2

Finis

Tune No. 183

Slowly

*p*

Rit.

Tune No. 184

Allegro

*mf*

Tune No. 185

Andante Expressivo

*mp*

*f*

*p*



**Bb Cornet  
Baritone T.C.**

**Tune No. 178**

Moderato



**Tune No. 179**

Allegretto



**Tune No. 180**

In 2 With Spirit



**Tune No. 181**

Allegretto



**Bb Cornet  
Baritone T.C.**

**Tune No. 182**

**Andante**

*mf*

1

2

Finis

**Tune No. 183**

**Slowly**

*p*

Rit.

**Tune No. 184**

**Allegro**

*mf*

**Tune No. 185**

**Andante Expressivo**

*mp*

*f*

*p*

Bb Cornet  
Baritone T.C.

Tune No. 186  
Moderate Waltz

mf

Tune No. 187  
Smoothly

p

mf

Dim.....cresc..... f

Tune No. 188  
Marcia

mf

Bb Cornet  
Baritone T.C.

Tune No. 189

Moderato

Tune No. 190

Tempo Di Bolero

Tune No. 191

Allegro

Tune No. 192

Dolce

**Bb Cornet  
Baritone T.C.**

**Tune No. 193**

**Ala Ho-Down**

**Tune No. 194**

**Marcia**

**Tune No. 195**

**Tenderly**

**Tune No. 196**

**Moderato**

**Bb Cornet  
Baritone T.C.**

**Tune No. 197  
Allegretto**

*mf*

*mf*

*f*

**Tune No. 198  
Allegro** ♩ =

*f*

**Tune No. 199  
Tempo Di Valse**

*mp*

**Tune No. 200  
Andante**

*mf*

*p*

*mf*

Ritard.

Bb Cornet  
Baritone T.C.

Tune No. 201  
Turkish Dance

Tune No. 202  
Polanais

Tune No. 203  
Clown Dance

Tune No. 204  
Odd Meter

